



terrafirma

LANDSCAPE ARCHITECTS



“Landscape architecture is **central to our quality of life**. It affects the way we **live**, the way we **interact** with each other, how well we **work**, and how much we **enjoy** and **look after our environment**. These are responsibilities we take **very seriously** at terra firma.”

terrafirma

LANDSCAPE ARCHITECTS

www.terrafirmaconsultancy.com



Chartered Landscape Architects with **proven expertise** across the
entire spectrum of landscape design consultancy services

about us

The terra firma Consultancy is a leading UK firm of chartered landscape architects, established in 1985, which has secured the highest reputation for its standard of work in landscape design consultancy services.

Our services encompass the entire range of the landscape architectural profession's remit, from inception, assessment, and concept to delivery and ongoing management beyond, and include large-scale masterplanning and environmental impact assessments, urban landscape design, rural landscape planning and design, as well as landscape architect expert witness to support clients, through to supervision of landscape design, project implementation, and subsequent landscape management.

terra firma's proven expertise has led it to be considered one of the leading consultancies in the field - with projects in over 30 countries across six continents.

The scope of the Practice's work engages the entire spectrum of landscape architecture: strategic landscape masterplans; landscape design for private estates and gardens; upmarket flats and houses; prestigious corporate headquarters; health and community care complexes; sports and leisure centres; schools; college and university buildings; heritage schemes; retail schemes; industrial and office complexes; public parks and open space; theme parks; urban streetscape; waterside; inner-city action programmes; sustainable community initiatives; etc.



30+
countries

40
years of experience

2000+
projects

terra firma is a Landscape Institute Registered Practice, obtained Investors in People Status in 2004, and is certified to quality standard ISO 9001, and environmental standard ISO 1400.

terra firma has been creating simple, sustainable and beautifully designed solutions for a huge range of projects since 1985.

Led by two directors, The terra firma Consultancy Ltd. is a 14-strong team, including five Chartered Landscape Architects, four Assistant Landscape Architects, and five Junior Technical and Administrative staff.



Robyn Butcher is Director of terra firma, having joined the company in 1995. She has worked on several hundred projects in all sectors; including the award-winning BA i360 public realm scheme for Brighton and Hove City Council. Robyn regularly acts as an expert witness and is involved in all aspects of the Practice and project management.



Alison Galbraith is Director of terra firma, has over 20 years of experience and has been with the company since 2002. She has authored numerous landscape-related studies and led many design projects, including Maggie's Cancer Care Centre in Swansea, and the award-nominated Leonard Cheshire Memorial Garden.

terra firma undertakes design and planning work in every sector; for local government and central government departments, property developers, and private clients throughout the UK. The company has a four decade, innovative, and award-winning track record.

Get in touch with us...

Heritage Landscape, Parks & Gardens **4**



Leisure & Tourism **10**



Public & Urban Spaces **15**



Health & Education **21**



Residential & Community **27**



Corporate, Commercial & Retail **33**



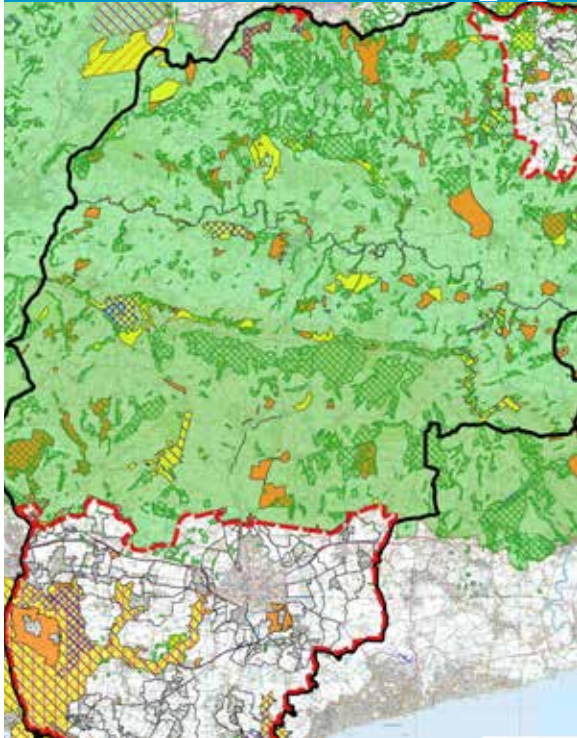
Masterplanning **41**



Environmental Impact Assessments **45**



Landscape Capacity Studies & Design Guidance **49**



South Downs National Park **53**





Heritage Landscape, Parks & Gardens





Sutton Hoo National Trust Woodbridge, Suffolk

RIBA National Award winning scheme for landscape interventions and assessment related to visitor experience upgrades for museum plaza, interpretive routes and viewing tower for this hugely important Anglo Saxon burial site.



Muslim Burial Ground Horsell Common, Woking



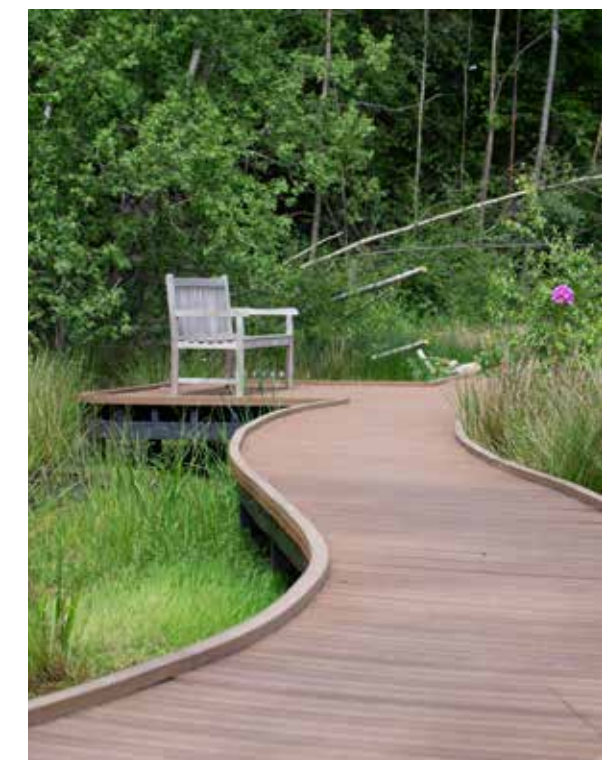
Memorial garden to fallen Muslim soldiers.

A reflective fusion of Islamic traditional garden with Surrey Heath which was subject of a BBC documentary and overall winner of the 2019 Local Government News Urban Green Space Award.



Brookwood Cemetery Surrey

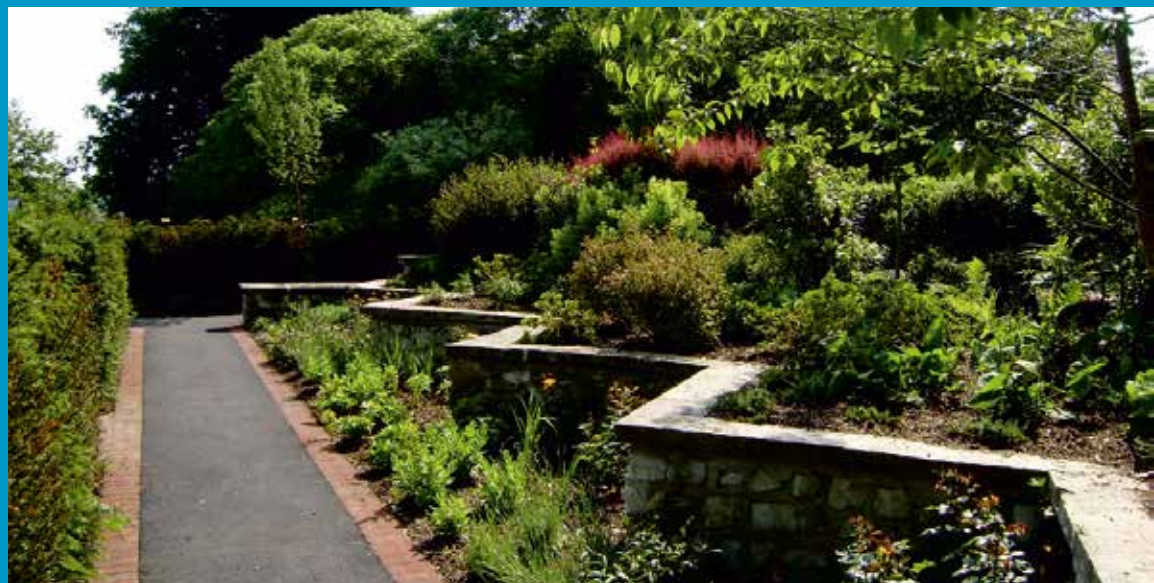
A land reclamation scheme, processing previously dumped material and re-purposing it as new burial grounds, connected by a boardwalk across tranquil wetlands.





Boksto Lithuania

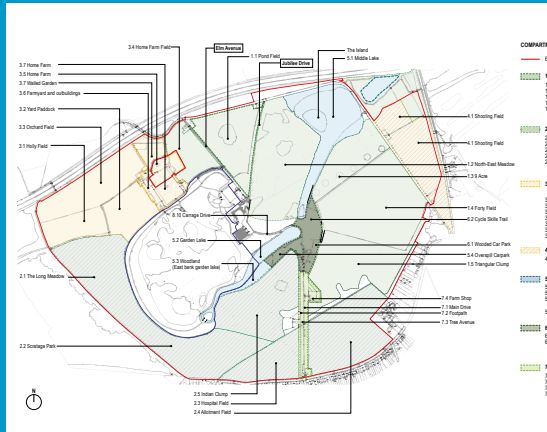
A remarkable urban scheme in the city's old town that re-purposes an historic hospital site for high end residential and office uses along with restaurant and spa. terra firma LT were integral to the design team in modelling and overseeing delivery of the open spaces.



Le Court Leonard Cheshire Memorial Garden Liss, Hampshire

The final piece of a masterplan to re-purpose the original Cheshire Home is a memorial to its founder designed by terra firma and a Horticulture Week Award nominated garden that remains open to the public

Osterley Park London



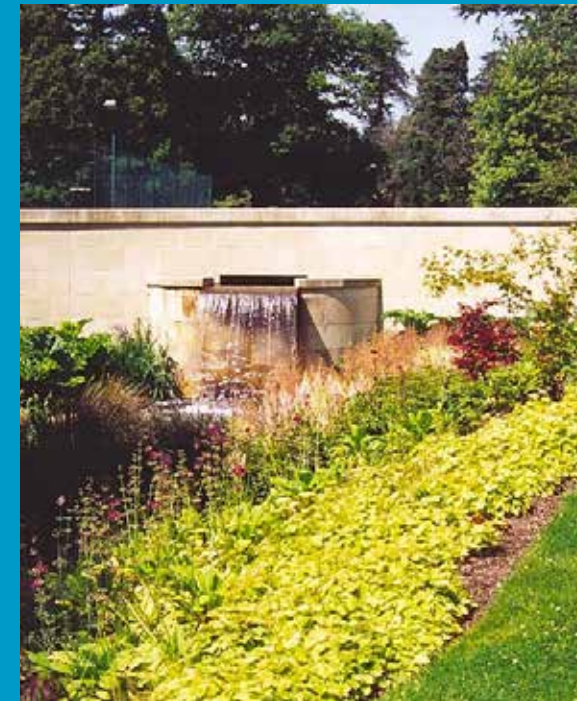
Conservation Management Plan for the National Trust's West London flagship project.



Old Queen Street
London
Private Garden



Creation of an extraordinary parkland
gardens within the framework of an
historic arboretum.

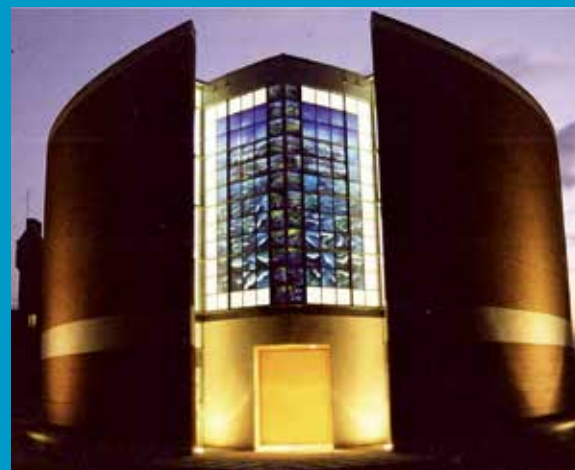


Tittenhurst Park
Ascot, Berkshire



**Falklands Islands
Memorial Chapel**
Berkshire

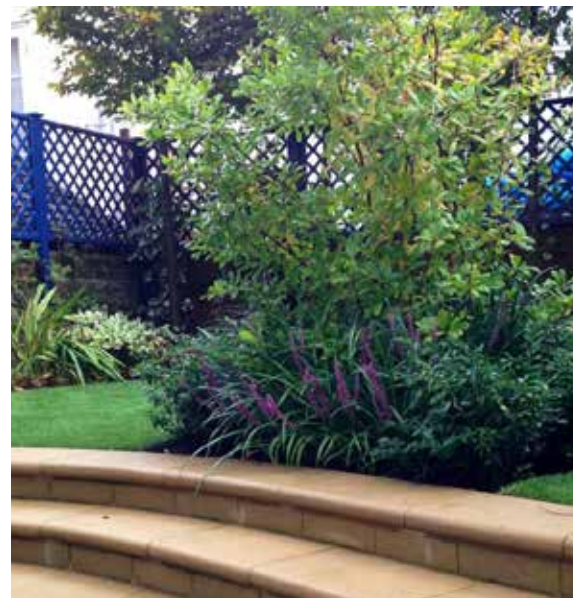
Design for the setting and garden of the
conflict's prime national memorial.



Panorama Road
Poole
Private Garden



Campden Hill Square
Kensington, London
Private Garden



Dropmore Estate
Buckinghamshire

Conservation Management Plan
and Landscape Masterplanning
for historic estate built by Prime
Minister Lord Grenville and home
to an important pinetum.



Grove Place
Hampshire

Masterplanning historic parkland
for new school premises, along with
replacing of lime avenue



Private Residence
Dulwich Village





Private residence
Renovated chalk quarry
Hampshire



Enviropark
Portsmouth

Millennium Vision for a 21st Century eco-park on
restored tip at gateway to the city.

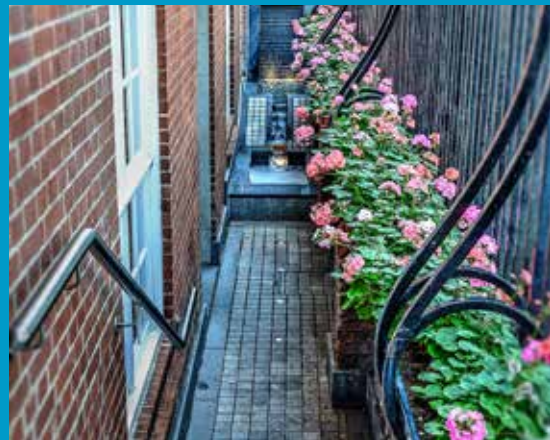


Heritage landscape, parks and gardens are key elements in the work of a **Landscape Architect** and form a large part of **terra firma's** portfolio.



Leisure & Tourism





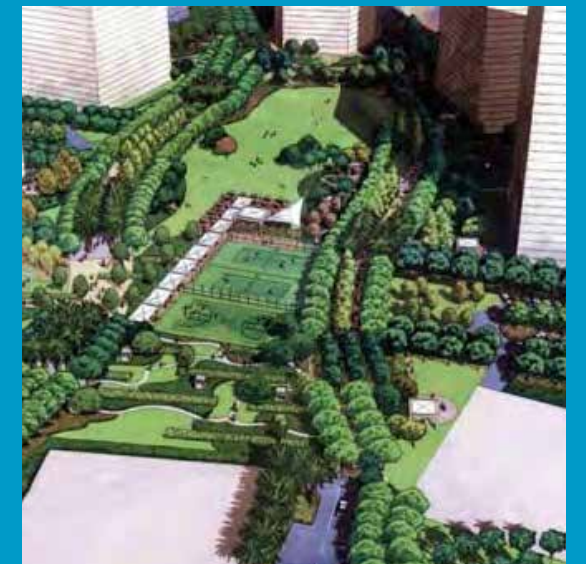
Forbury Hotel's Cerise Restaurant
Reading



MAIO Beach Development
Cape Verde

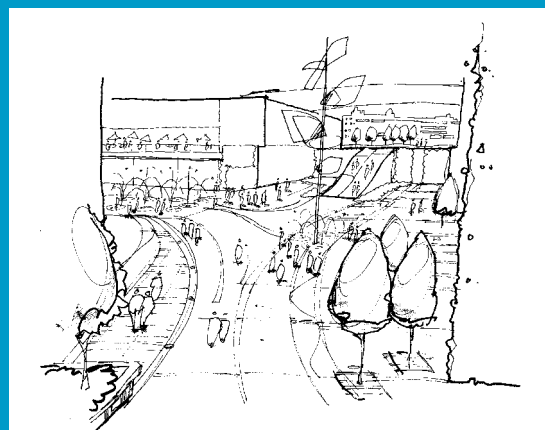


Al Falah New Town
with Alshamsi terra firma and
Alison Hainey
Abu Dhabi





Butlins Spa Hotel Masterplan
Bognor Regis



Leisureworld
Southampton

Vision for area regeneration with
Chapman Taylor Architects for
Sovereign Centros.



Wendover Woods
with Forestry Commission
Buckinghamshire

Upgraded access and parking
with associated landscape works
alongside new visitor centre (by
ReFormat architects) for Forestry
England.



Butterfly World
with Ivan Hicks
Hertfordshire





Boksto
Vilnius



Masterplanning project for extensive mixed use and leisure.



Da Peng Valley
China



Hoe Valley School & Woking Sportsbox
Woking

New secondary school and leisure centre in a Green Belt with extensive sports facilities



Butser Ancient Farm
Hampshire

Plans for extending this important experimental archaeology and educational site in the heart of the South Downs.

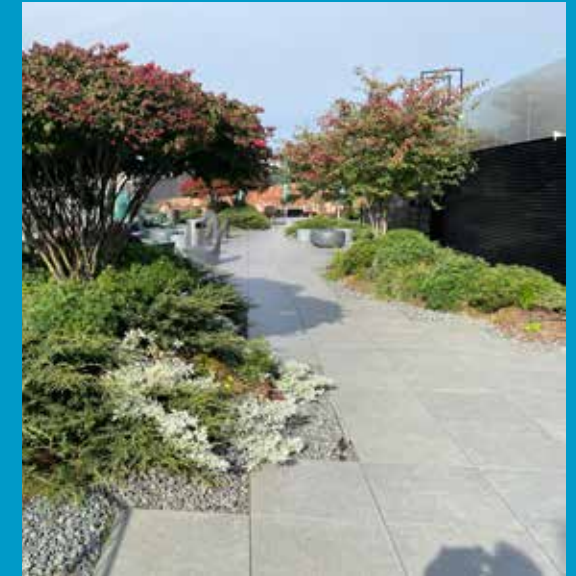


Le meridien Mina Seyahi (W Hotel)
Dubai
Landscape design by TFLA Dubai



Hilton Roof Garden
Vilnius

terra firma LT designed landscape for new landmark city centre hotel, including public realm and rooftop garden.



Winchester Leisure Centre
Winchester

Integrated green and blue infrastructure.





Public & Urban Spaces





Petershill
City of London

Series of public open spaces at the foot of St Paul's designed by Lionel Fanshawe while at CFA and completed with input after joining terra firma in 1996.



**Lion Square &
Dennis Schiama Building**
Portsmouth

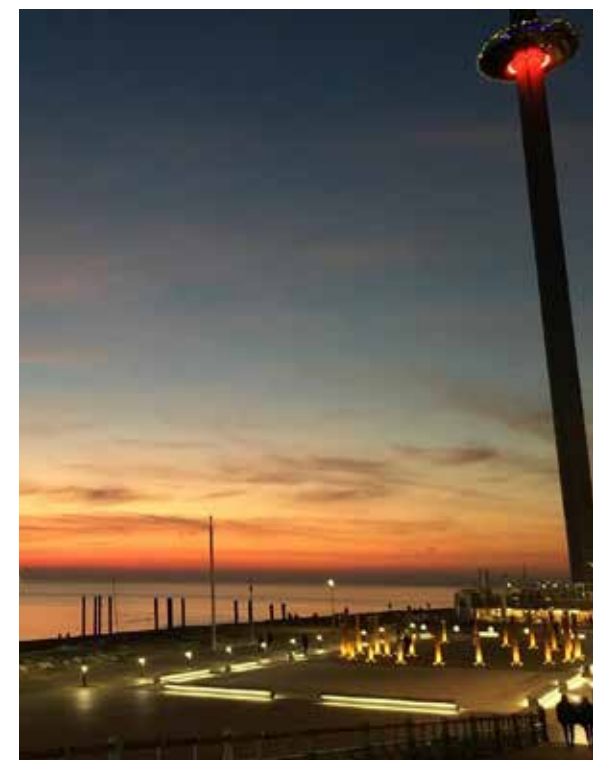


Re-design of public square in tandem with new building for the University of Portsmouth



BA i360 Public Realm Plazas
Brighton

Award-winning detailed design of two seafront space either side of the iconic vertical pier





Cumberland Street Homezone
Portsmouth

Award-winning retro fit homezone
for Portsmouth City Council



Chichester Canal Basin
West Sussex



Hohhot Retail
with Alison Hainey
Inner Mongolia, China

Retail project in northern China
masterplanned with Alison Hainey
and Geddes architects.



Paddington Canal Basin
London





Quadrum
with terra firma LT
Vilnius, Lithuania



White City Regeneration Area
London Borough of
Hammersmith and Fulham

(with Ramboll UK and
Sisk Contractors)
Public plaza and new pedestrian
bridge at the entrance to a major
redevelopment in the heart of West
London.



Harwich Navyard
Essex

Mixed used development
application for re-purposing of
historic shipyard area with Gaunt
Francis Architects.



Manarat Al Saadiyat
with Alshamsi terra firma
UAE



Cultural Centre landscape by
Alshamsi terra firma alongside
Aedas Architects.





Vilnia Slopes Vilnius

New housing area lanscape by TFLT.



Japanese Garden Vilnius

Recently opened public park
designed by TFLT



Sierakausko Vilnius

TFLT designed public realm for
new city district.





Vilnius Stadium
Lithuania

TFLT execution of Martha Schwartz
public realm design.





Health & Education



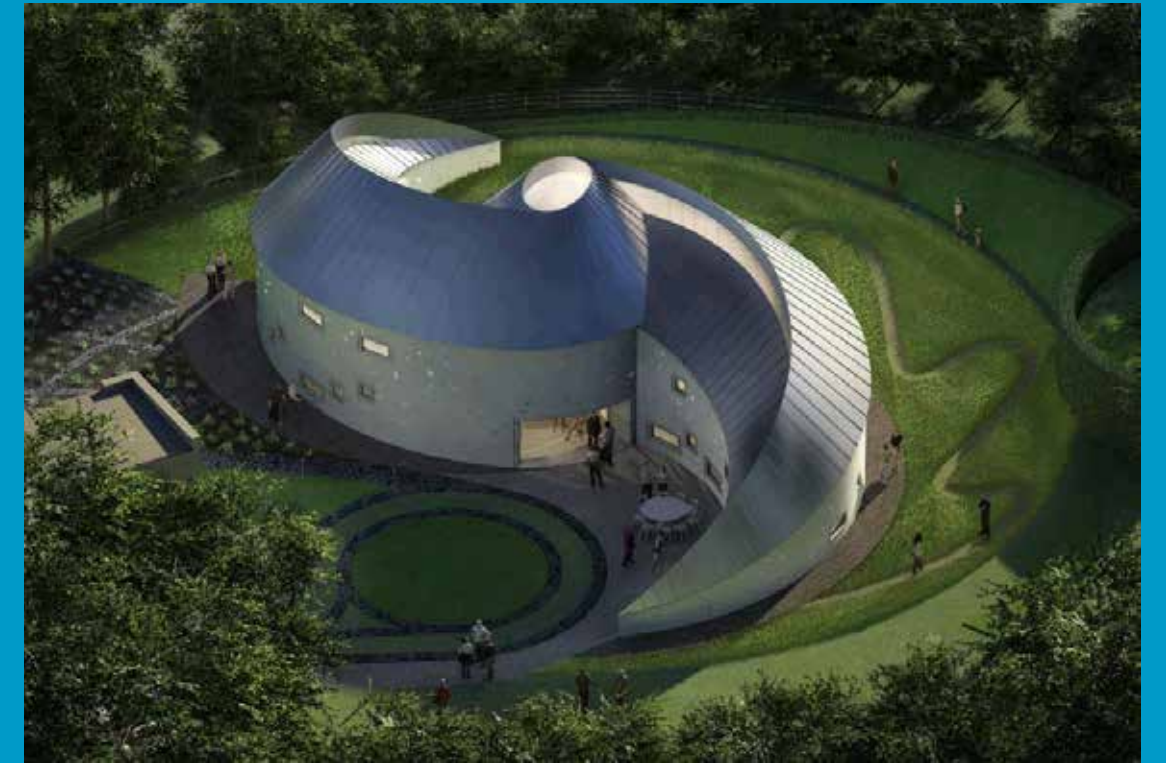


Brockenhurst College STEM Centre
Hampshire

Landscape design for a new student garden and link between the existing sixth form college and the new STEM building.



St Nicholas SEN School
Croydon



Maggie's Centre
(with Kim Wilkie)
Swansea, Wales





Oxford University Biochemistry Building Oxford

Landscape Design to curtilage of
iconic new building at centre of
university science area.



University of Birmingham Dubai

Landscape design by TFLA Dubai



University of Portsmouth Dental Outreach Hampshire

Landscape design to setting of new
building within university campus.



Landscape design for student
areas, sports provision and
parking for a new secondary
school on the former Arborfield
Garrison.



Bohunt School Wokingham





Willicombe Park
Royal Tunbridge Wells
Older persons retirement complex



Barton Peveril Sixth Form College
Eastleigh, Hampshire

A series of courtyard spaces designed by terra firma and completed in 2014, are well used by students and staff alike, with a wide range of seating and gathering opportunities and a covered area for performance, rehearsal and teaching.



Rikkyo School
Horsham



New sports fields for Japanese Boarding school integrated into countryside setting with bold landform modelling and new woodland plantings.



Ropemaker's Academy
Hailsham
Award-winning SEN school





The Austen Academy
Chineham
New SEN school on sloping site



**Greater Brighton
Metropolitan College**
Central Brighton



St Swithun's School
Winchester
New natural turf sports facilities and
new prep school car parking

terra firma has been involved in **health and education** projects at all scales, working with **government, trust, charities, healthcare authorities** and **private organisations**



Eastbourne Schools
East Sussex



BHASVIC Sixth Form College
East Sussex





Residential & Community





St Margaret's Midhurst

Early scheme within newly formed South Downs National Park on doorstep of their Headquarters. New housing within old convent school grounds within the town.



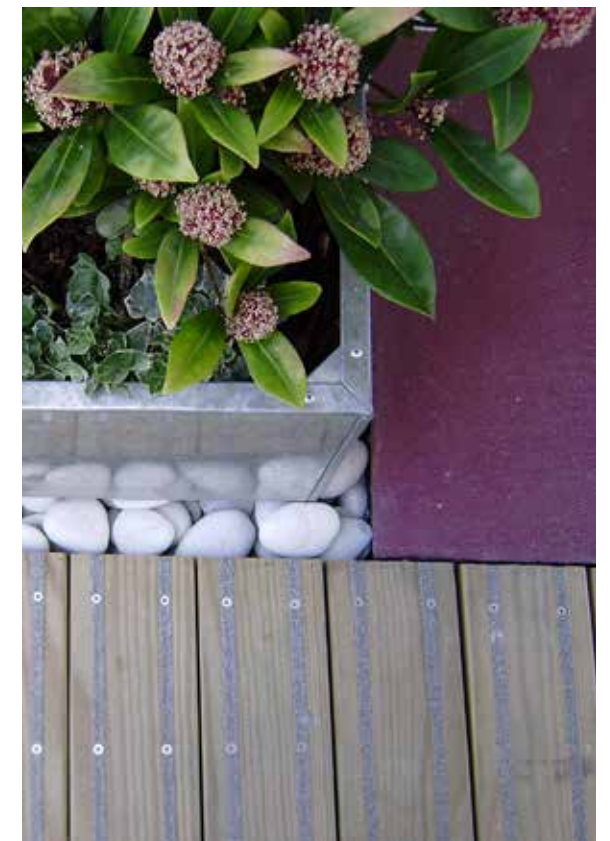
Sarah Robinson House Portsmouth, Hampshire

As part of an area regeneration strategy, terra firma was commissioned to redesign the grounds of this high-rise housing block, working closely with residents to enhance the amenity value and include a new community planting garden, improved streetscape and security, and a range of seating spaces.



Wallpaper Islington

New residential flats within renovated factory with landscape design on multiple floors.





Zekeriyakoy Istanbul

Dubai office designs for large scale coastal residential settlement negotiating steep topography.



Landscape led masterplan (with EIA LVIA) with Plus Architecture and Savills for the redevelopment of the old Syngenta site for contemporary housing community. Achieved planning 2020 and seen as an exemplar project by the SDNP Authority.



Fernhurst Park West Sussex



Timberyard Lane Lewes

Recently recognised in the SDNP Design Awards, this scheme overlooking the River Ouse in Lewes has a contemporary landscape designed by terra firma.





Churchill Retirement Living
Across the UK

terra firma acted as term
consultants on multiple projects
across the south of England.



Landscape architects have a **crucial role** to play in the housing sector, from the earliest stages of siting a development to **detailed design** of hard and soft landscape finishes.



Kelham Gardens Malborough

New housing scheme for Village Green Homes with green infrastructure and open space.



Stoneham, Cemetery Road Southampton

Hampshire's first zero carbon social housing complete with SUDS measures and productive horticulture area.



Al Muneera with Alshamsi terra firma Abu Dhabi

Large scale mixed use waterside development.





Ayos Tychonas
Cyprus

Low-irrigation landscape for hillside residential development.



Curzon Street
Mayfair, London

Courtyard roof garden for mixed use development.





Corporate, Commercial & Retail





Novartis HQ Humberside

Upgrade to public realm within
science/industrial hub.



Chineham Business Park Basingstoke

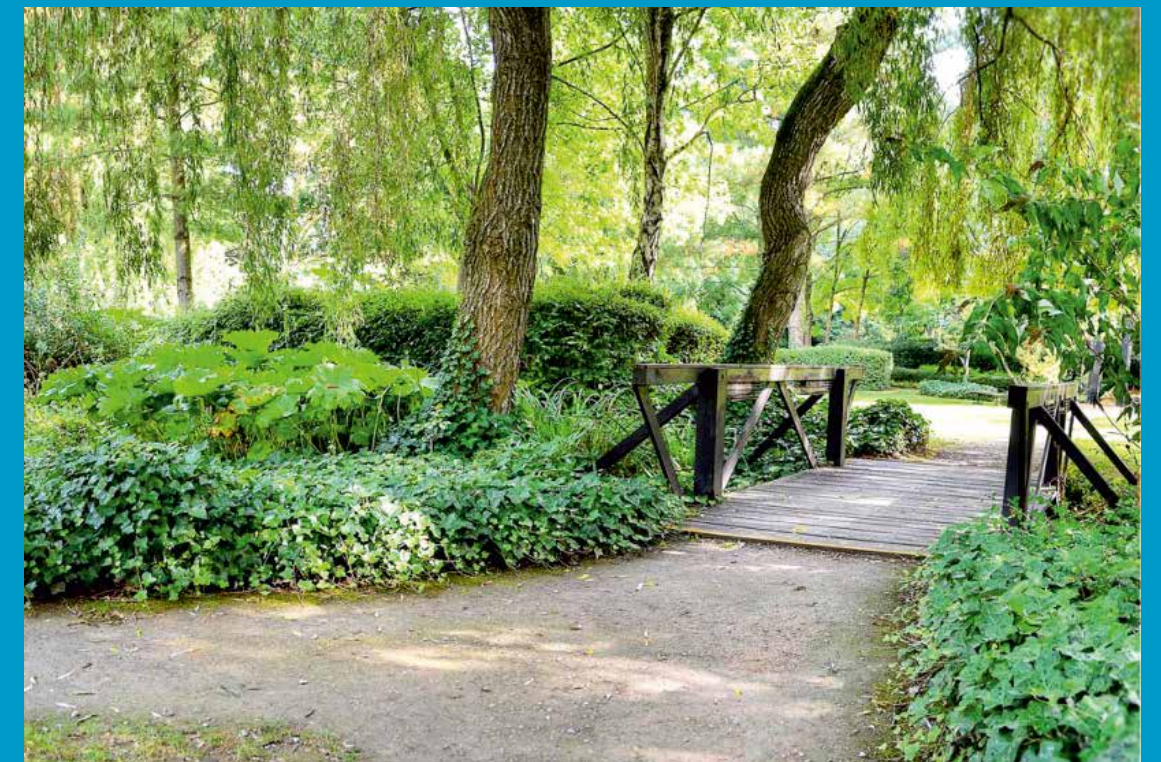


Masterplanning and Plot Landscape
Design for commercial premises set
within new parkland.



Hampshire Corporate Park Chandler's Ford

Early award winning terra firma
project in the late 1980's based
around the US business park
model and still an exemplar
project a third of a century later.





HORIBA MIRA Nuneaton

terra firma were first involved at MIRA in 2009 and ever since have been involved in the masterplanning, EIA and delivery of green infrastructure for this flagship research facility for the UK automobile industry. We are currently underway with design and delivery of the next stage of site wide infrastructure including the central linear park. This has involved long term strategic thinking, client, team, planning authority and community engagement and creating a vision for a connected green infrastructure that can help define the park and make it into a place that is far more than a place of work.



Odney Club John Lewis Conference Centre Cookham

Setting of new hub building within parkland including green roof and curved deck.





Kingstanding Shopping Centre
Birmingham

Upgrading of retail premises including subconsultant signage and branding.



NATS Prestwick
Scotland



Basepoint
Gosport

Enterprise Centre design



Over the years, terra firma has gained a reputation in the **commerce** and **industry sectors** for producing **high quality, robust design-led solutions** that have made a **significant, positive impact** for their varied clients.

Kentish Wine Vault Hampshire

Landscape masterplan (with LVIA) with Foster and Partners for the creation of an exemplar sustainable winery in the Kent Downs AONB. Sleek, seamless design carries through to every detail



Origin Business Park Park Royal, London



terra firma has worked on over a dozen projects for the biggest developers of UK industrial parks including; the old Guinness Brewery site, Origin at Park Royal (pictured), as well as sites located as far north as Trafford Park in Manchester, in the Midlands, along the M40 and M4 corridor and throughout London.





Meraas and EO Offices Dubai

Headquarters building landscape for Royal Family development company with Hopkins architects.

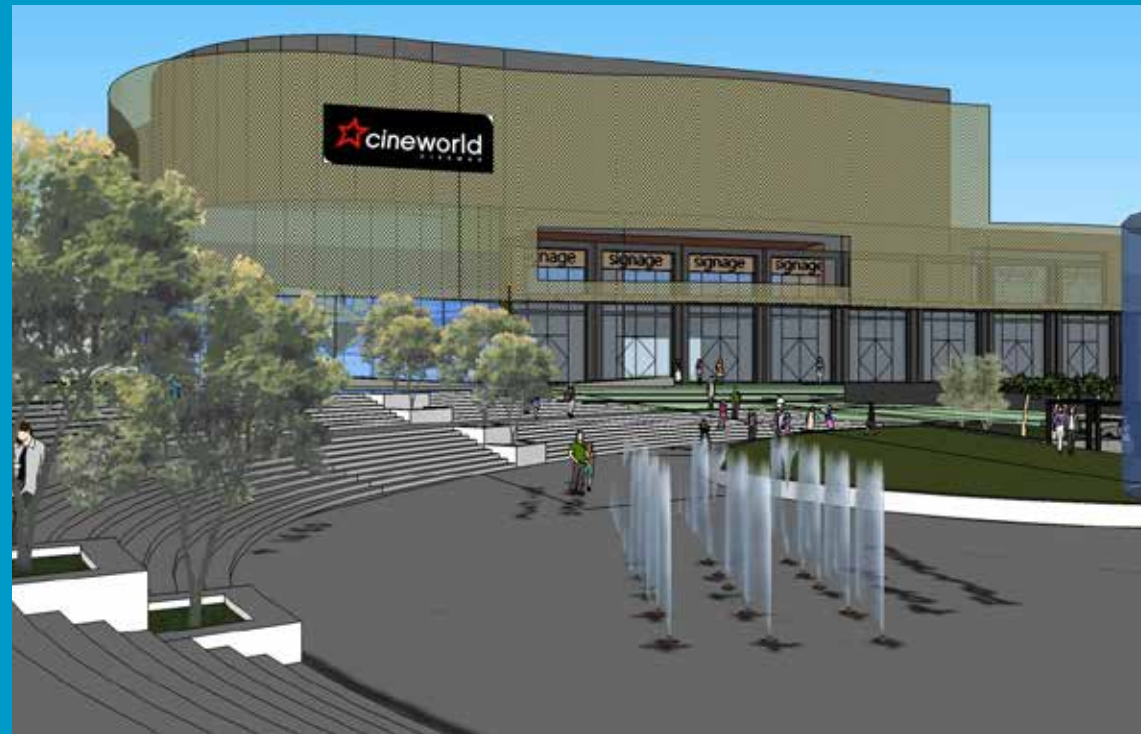


West Yorkshire Police Headquarters & Training Facilities Leeds and Wakefield





Urban Planning Council
with Alshamsi terra firma
Abu Dhabi



Southend FC
Essex



Dunsbury Park
Havant

terra firma worked with Peter Brett Associates on the restoration and ecological enhancement of a section of the Hermitage Stream and the landscape for the wider business park.





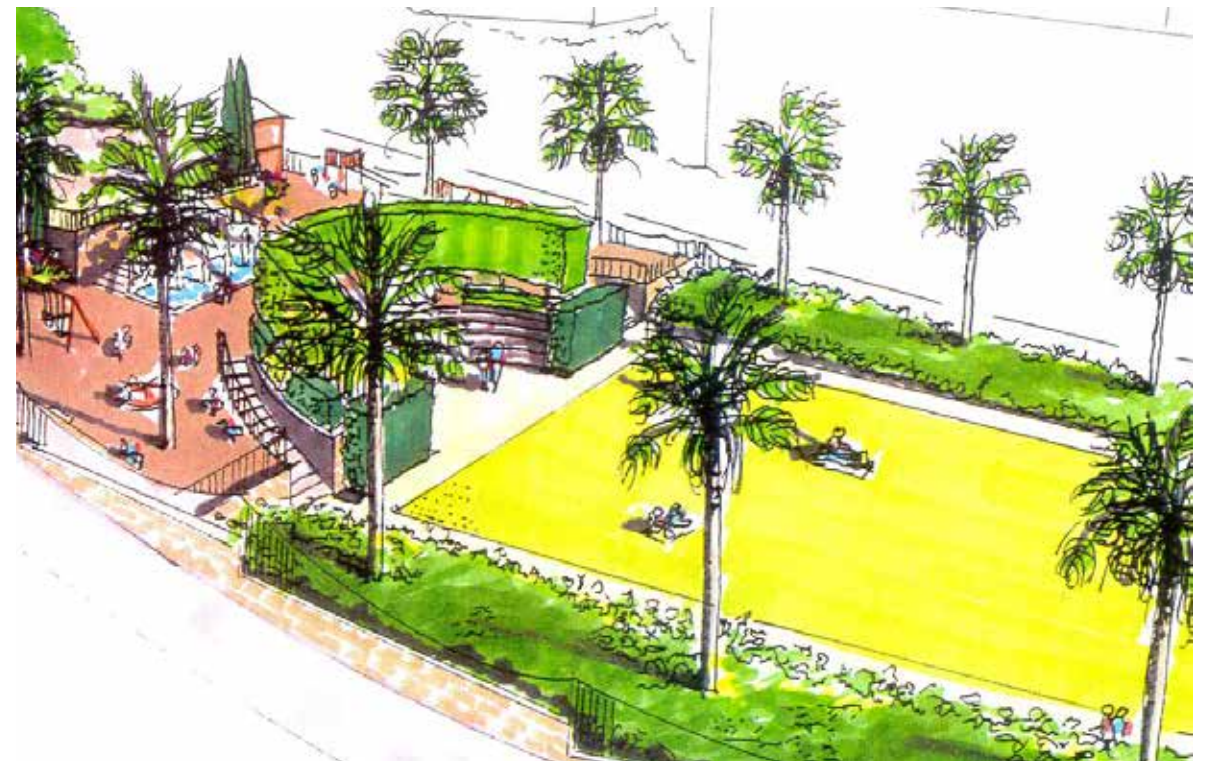
Umm al Quwain Marina
UAE

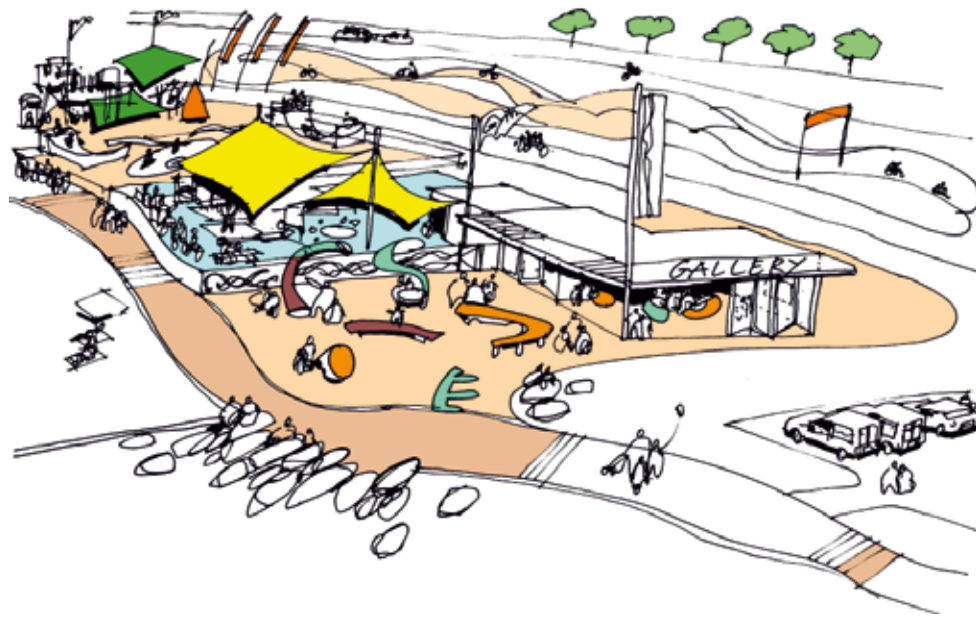
Early Dubai office design for EMAAR
Sales Centre and Development Hub.





Masterplanning





Hayling Island Seafront Hampshire

Seafront regeneration project



Beirut Waterfront EXPO & Garden Festival Lebanon

Seafront regeneration project



The concept for the buildings within the 'hub' is to create an informal community space surrounded by geometrically simple buildings constructed in traditional local materials.

Following inspiration from the adjacent fishing hub and historic port construction of the surrounding area, the intention has been to create a sympathetic intervention that complements the neighbouring waterfront in its existing port purpose, summer that events can take place.

The arrangement of the existing waterfront's hub has been carefully considered to create an informal community space without hierarchy. This informal space is reflected in the housing and construction of the existing scheme.

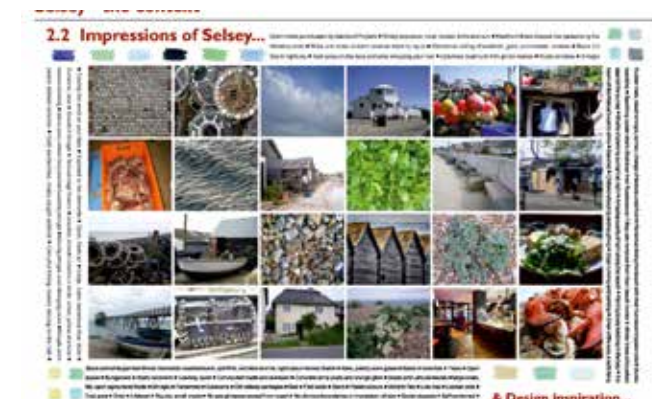
A new solid geometry with a single pitched roof is used across the scheme to reflect the form of each building. The existing material of stone and brick is used to create a seamless, integrated quality to each building.

Each building is made of stone and brick, with a pitched roof, creating a sense of continuity and a sense of place.

The programme is largely divided into a sequence of spaces for each use type. The programme is designed to be flexible and adaptable to the needs of the community.

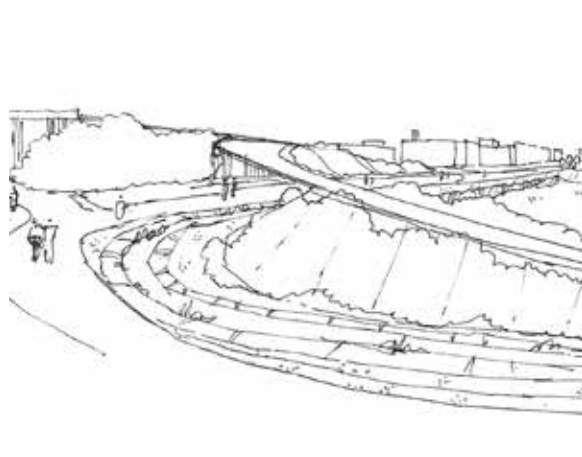
The scheme is designed to be a catalyst for the regeneration of the area, creating a sense of place and a sense of community.

The scheme is designed to be a catalyst for the regeneration of the area, creating a sense of place and a sense of community.



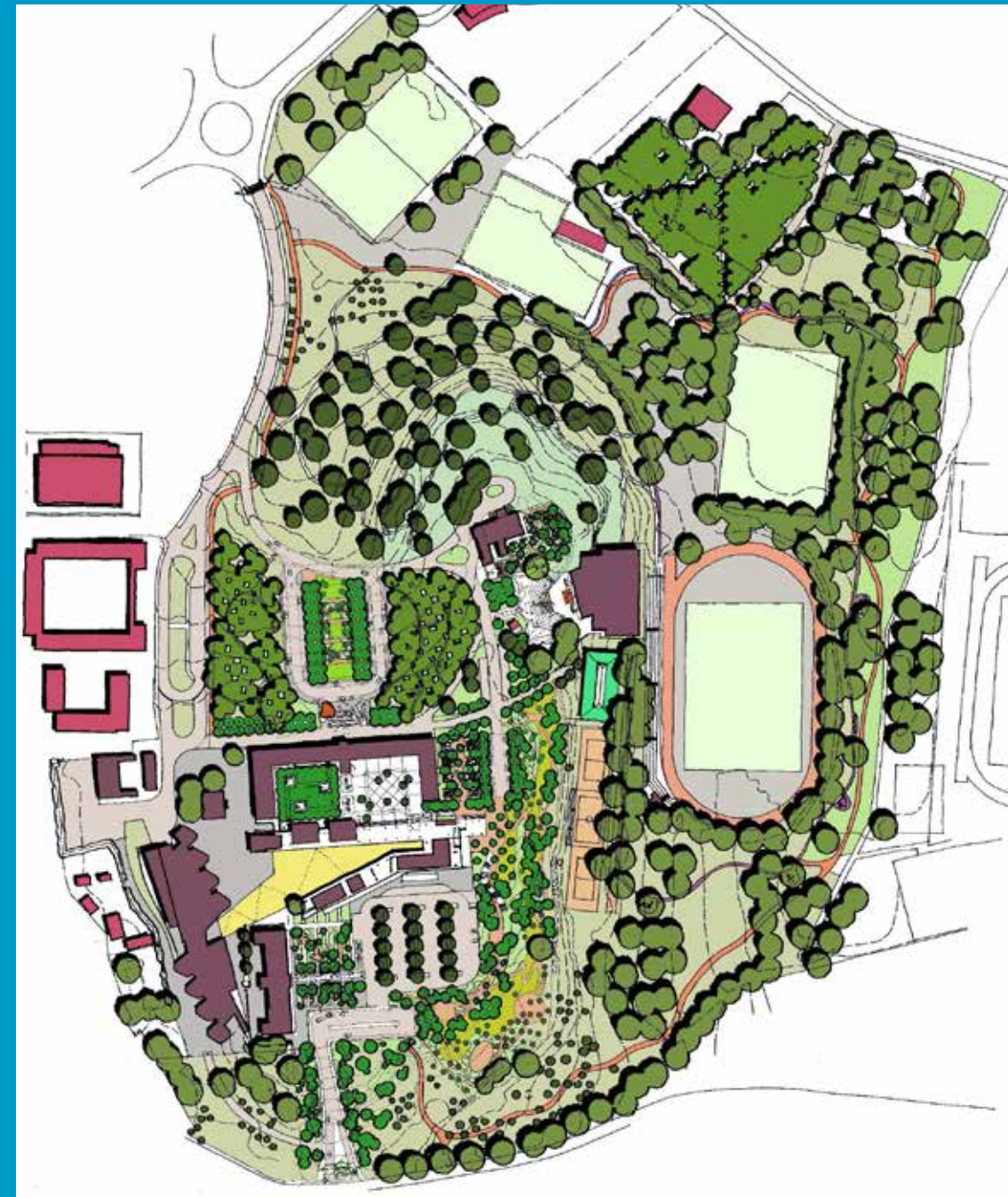
East Beach Seafront Selsey

Seafront regeneration project



Cambridge Biomedical Area Cambridge

Landscape input into exploration of masterplan for extension area with
Allies Morrison and Hawkins Brown.



The English School Nicosia, Cyprus

Masterplan for Cyprus'
most prestigious school.



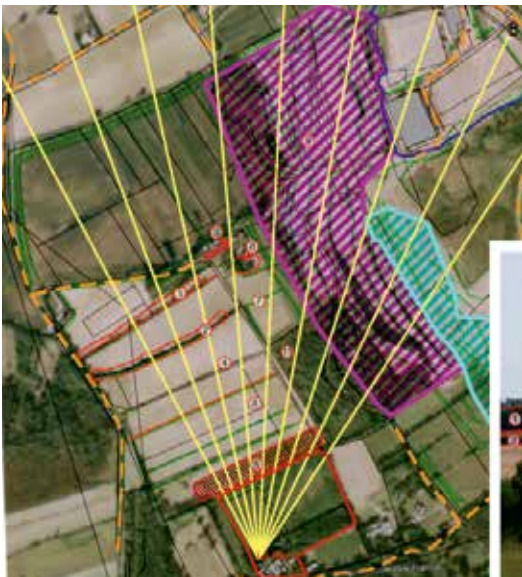
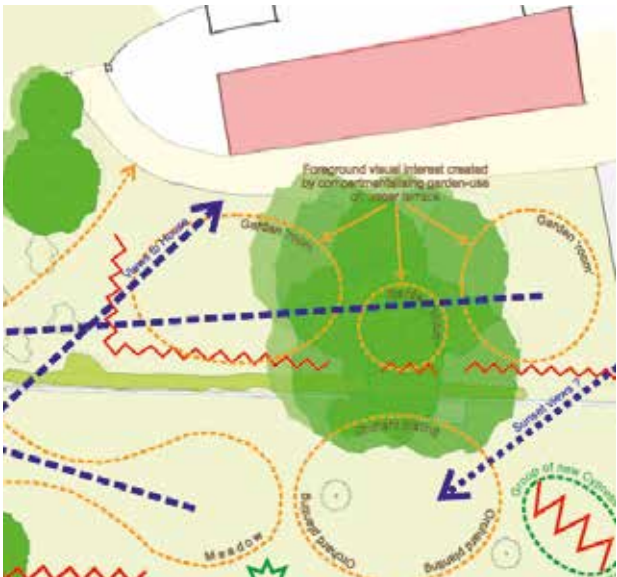
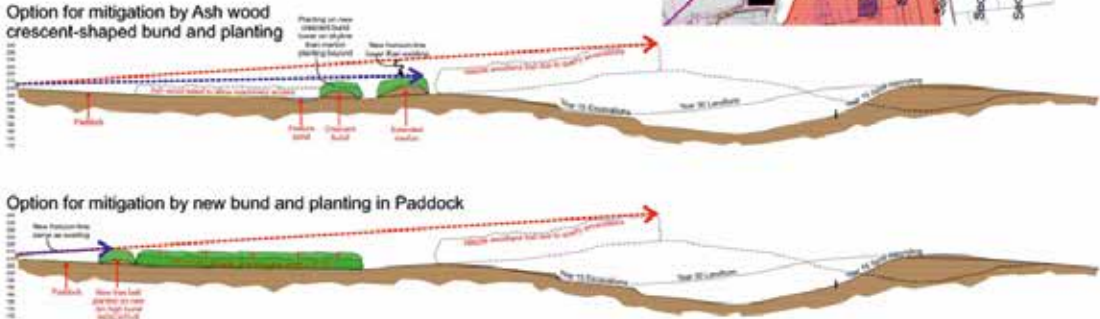


Environmental Impact Assessments

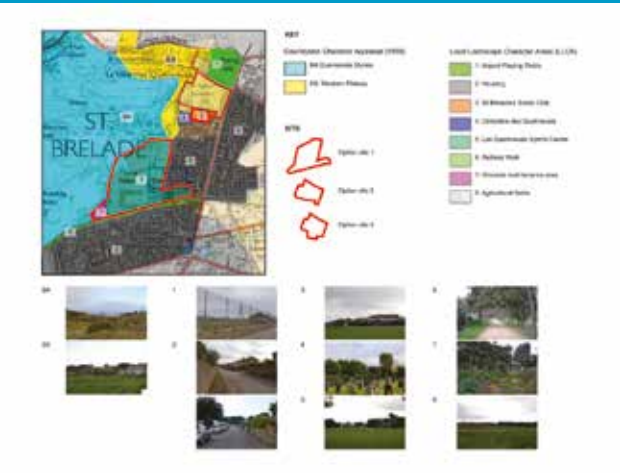


Mining Impacts
St. Papoul

Mining impacts study for private residence at St. Papoul, France



Les Quennevais School
Jersey



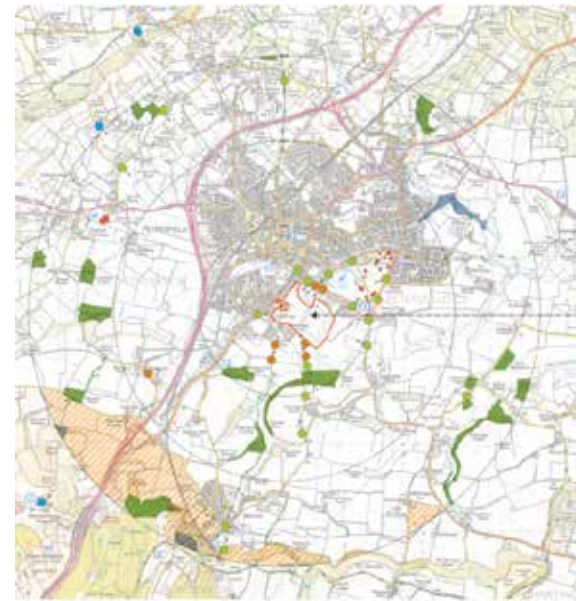
New RNLI Berths
Isle of Man



terra firma is a
Landscape Institute
registered practice, a Law
Society registered expert
witness, a member of
the **Urban Design Group**
and an **Associate of the**
Institute of Environmental
Management and
Assessment.



Causeway Farm Housing
Petersfield



Rosia Montana Goldfields
Romania

EIA and masterplan for landscape
regeneration of Europe's largest
Open Cast Goldmine



Waste Water Treatment Plant
Europa Point, Gibraltar

EIA for important new
infrastructure involving offshore
appraisal.

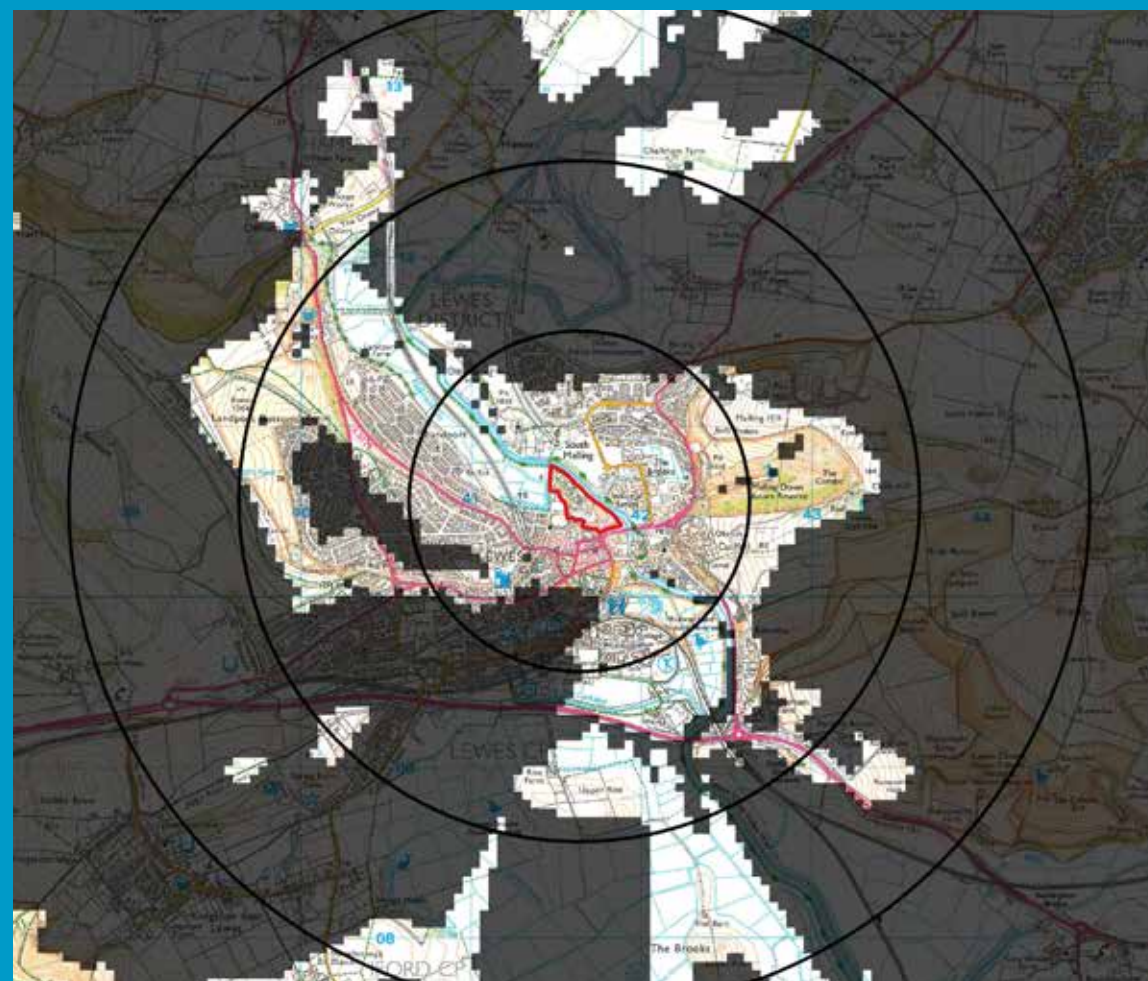


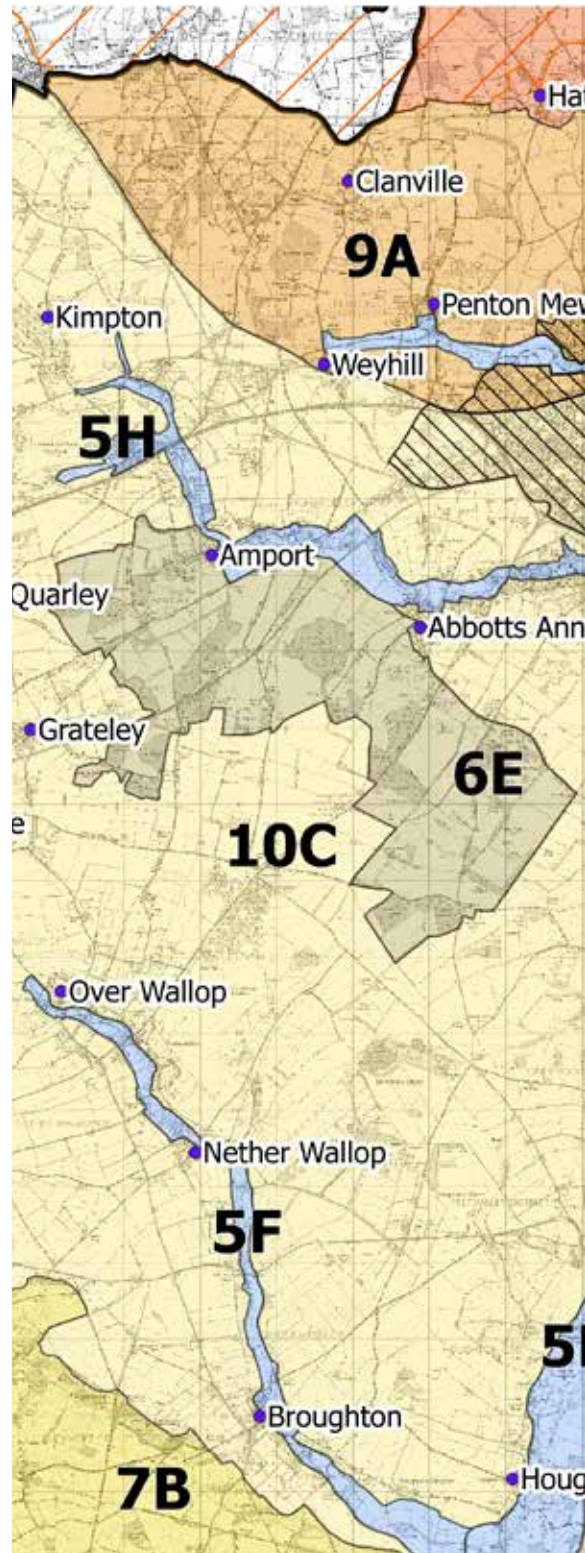
Roots Hall
Southend-on-Sea



Phoenix Project
Lewes

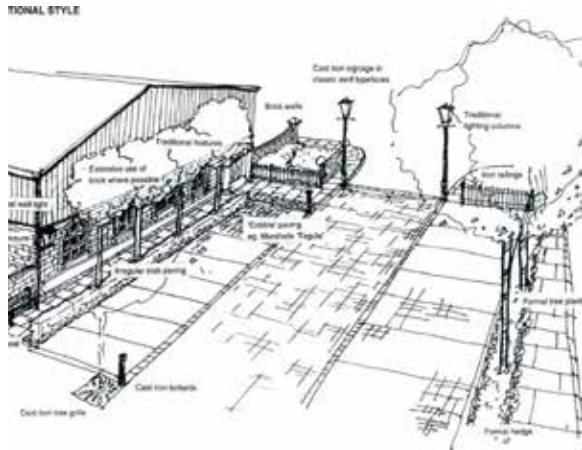
Advice through LVIA process to masterplan for Human Nature's ground-breaking carbon positive redevelopment of Lewes' NE Quarter.



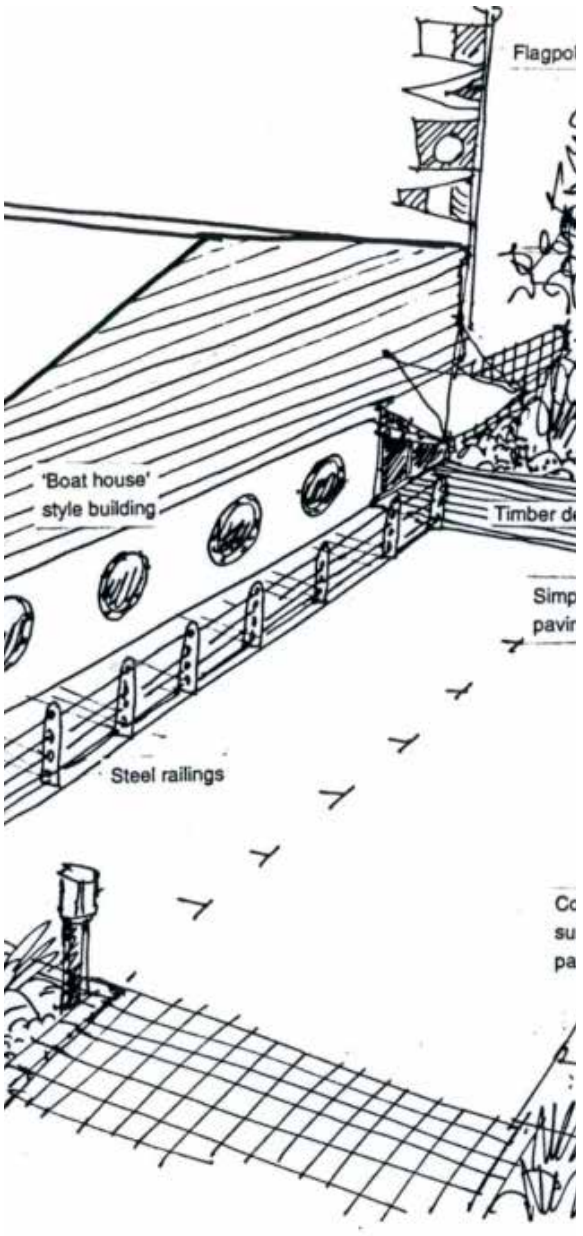
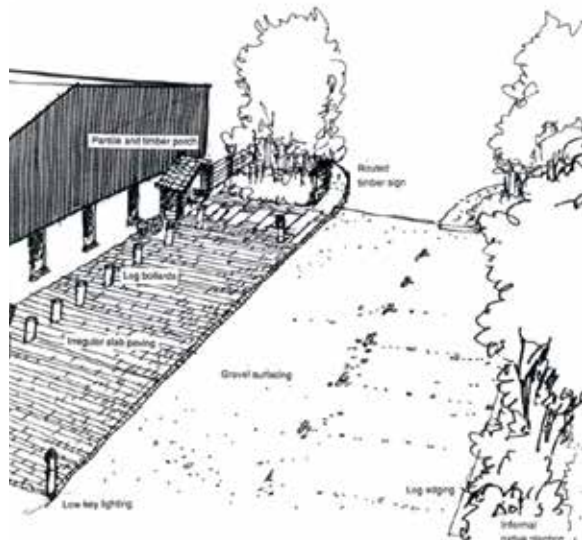


Landscape Capacity Studies & Design Guidance

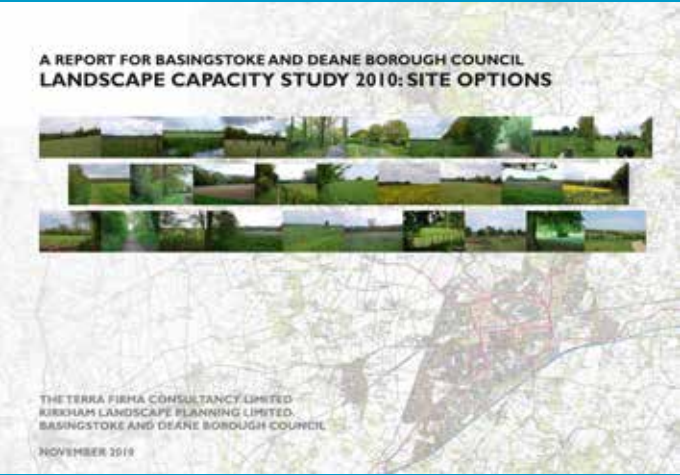




Building Integration Guidelines Isle of Wight



Basingstoke Housing Capacity Study with Bettina Kirkham Hampshire



terra firma has produced a variety of supporting documents for local authorities, including landscape capacity studies, and design guidelines for new developments.



Chichester Harbour AONB Design Guidelines West Sussex



General guidelines:



2. SCALE AND MASSING

The scale, mass and design of your house or extension will be critical to ensuring that the development is appropriate to the character of the AONB landscape. Houses of a greater size or grander appearance may lead to a loss of local character.

Where appropriate, your development proposals should complement surrounding development character. For example if your house plot is set within an area of predominantly single storey bungalows, then a two or three storey house or extension may not be acceptable.

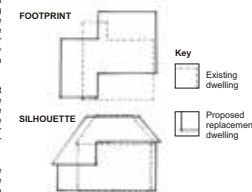
The position within the plot is very important to consider, not only for the siting of the house or extension itself, but also to make sure that the privacy and amenities, such as light, of neighbouring properties are preserved.

3. GUIDANCE ON SIZE INCREASE

Extensions or replacement dwellings can have a significant impact on the wider AONB landscape, particularly when a significant increase in size is proposed. When considering substantial increases, a guideline of a 50% increase above the existing footprint, and a 25% increase above the existing 'silhouette' (on any elevation visible from the wider landscape) is likely to be the maximum increase that may be acceptable (provided the property has not already been significantly extended).

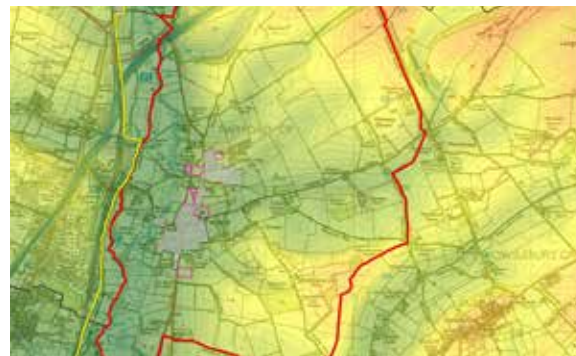
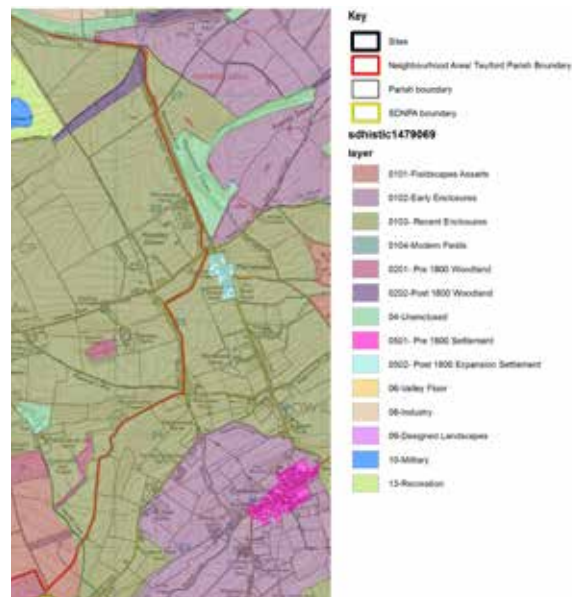
For replacement dwellings, applicants should submit proposed elevations and plans with the outline of the existing house superimposed on the plans, so that the proposed size increase is obvious. The increase will be assessed on its impact as viewed from the wider landscape; this might be from the water, footpaths, or across open countryside.

The acceptability of any increase in size (whether within the guideline limits or not) will be dependent on whether the site can accommodate the increase while still respecting local character by reflecting the surrounding pattern of development and spaces between buildings. Acceptability will also depend on the setting of the site within the landscape, and the design, materials and finishes employed. Larger replacement dwellings or extensions will require careful thought about siting, silhouette, height, massing and articulation, particularly of roof lines. A glossary of terms is included on page 32.

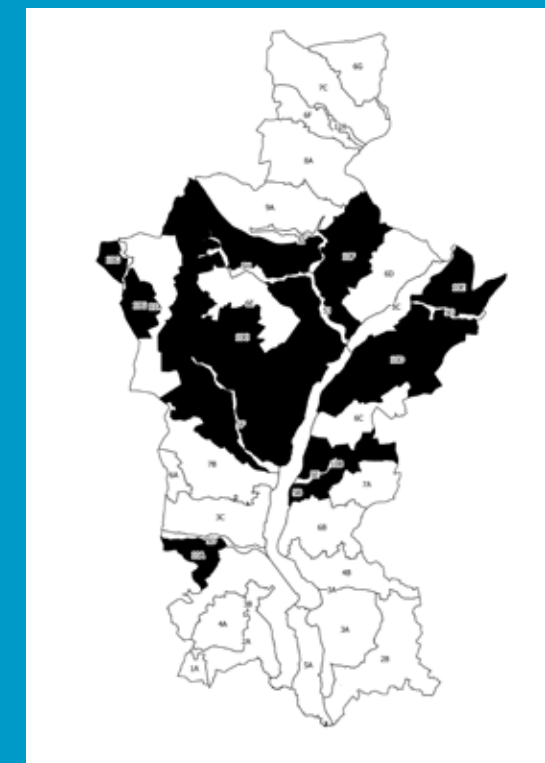
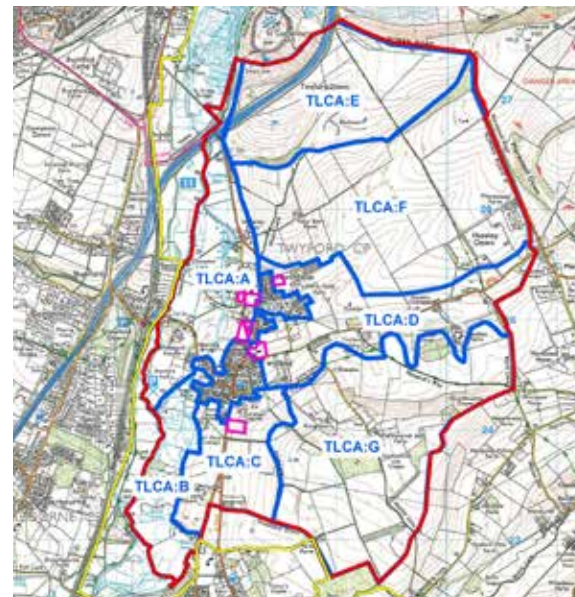


Flood risk
Predicted future rises in sea level mean that new properties may be required to be built on a higher level than existing ground; approximately 1 - 1.5m. Mitigation of the increased visual impact of this requirement is possible through careful design of roof lines, height of eaves and reduction of roof pitch.

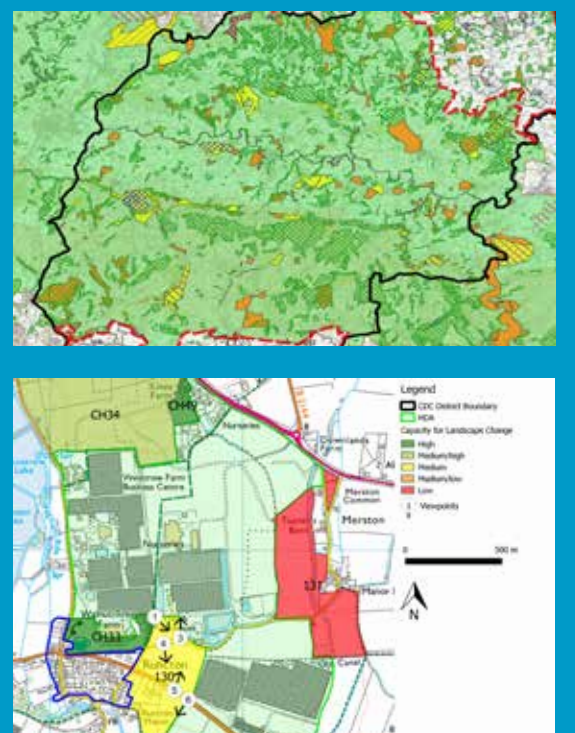
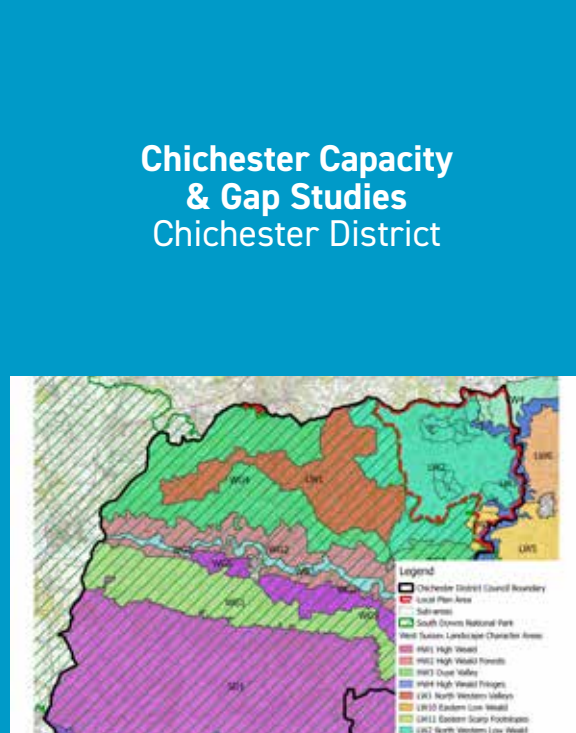
GUIDELINES FOR NEW DWELLINGS AND EXTENSIONS Chichester Harbour Area of Outstanding Natural Beauty



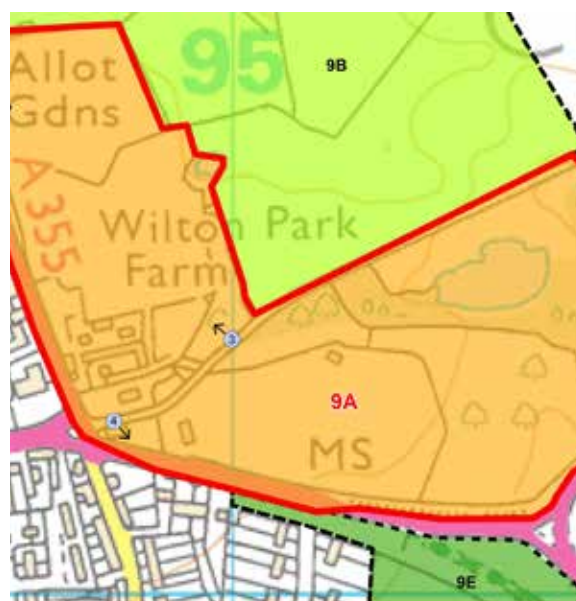
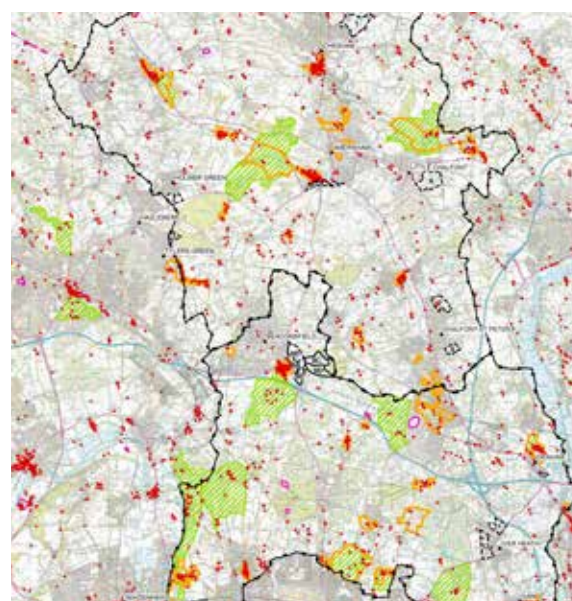
Twyford Parish Landscape Assessment
Hampshire



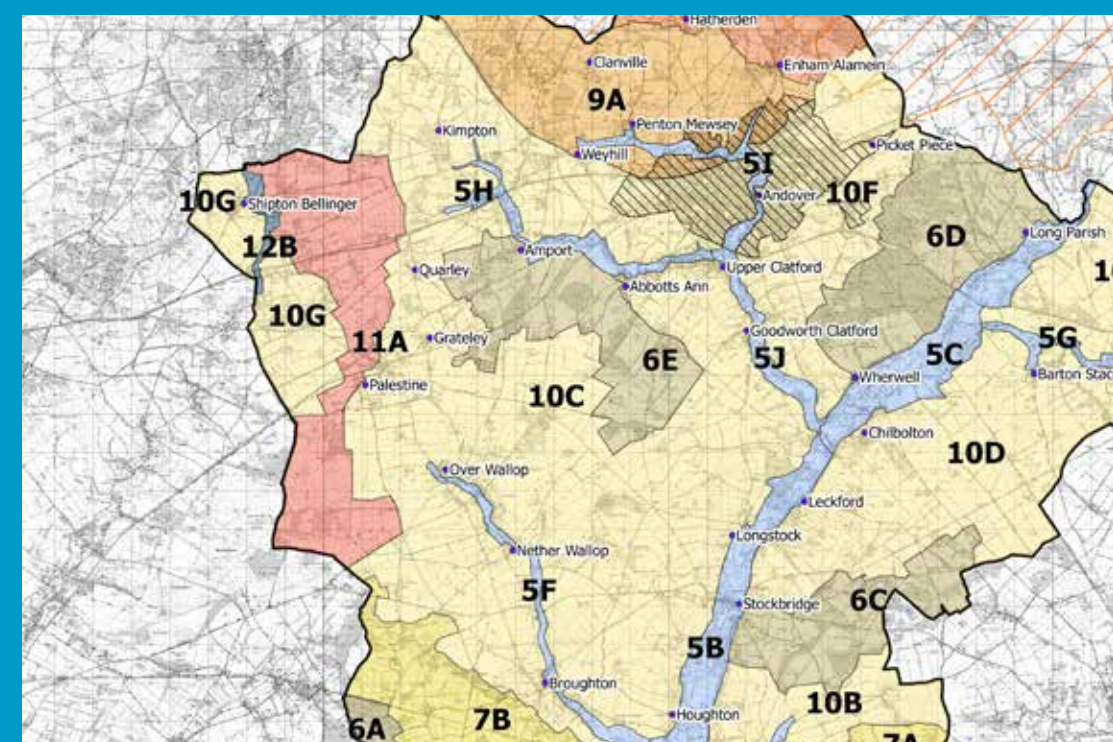
Chichester Capacity & Gap Studies
Chichester District



Test Valley Borough Council Landscape Character Assessment
Hampshire

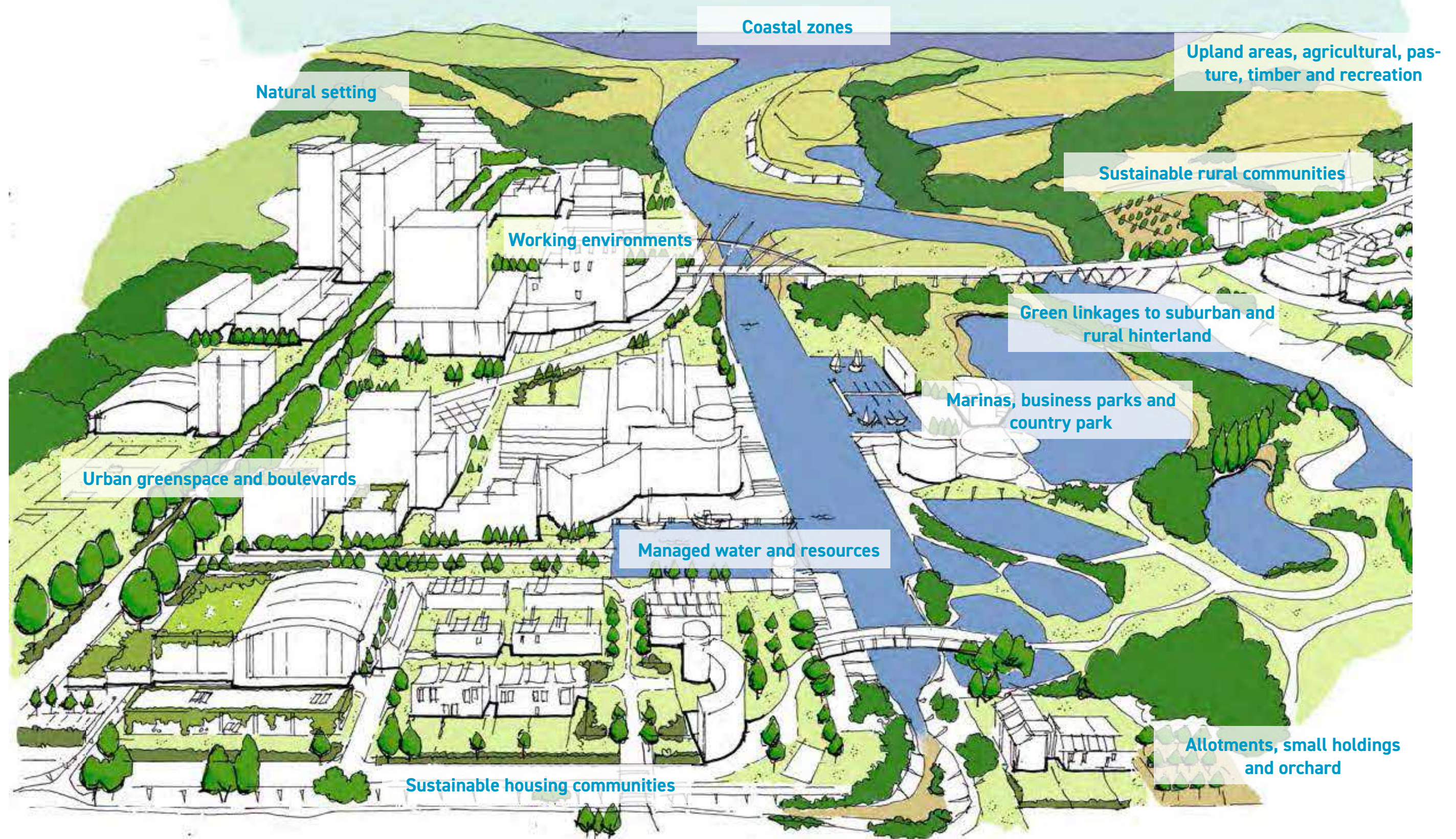


Chiltern & South Bucks Capacity Study
Buckinghamshire



Green Infrastructure

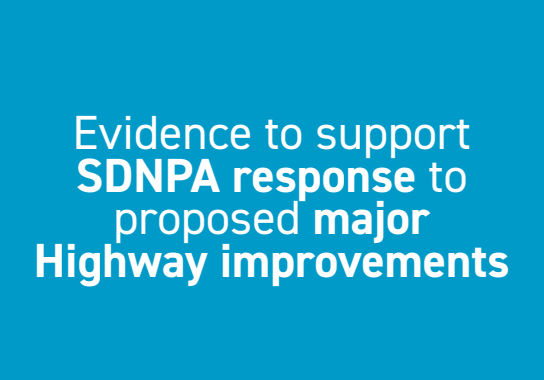
The interwoven fabric of nature, land-use and our settlements



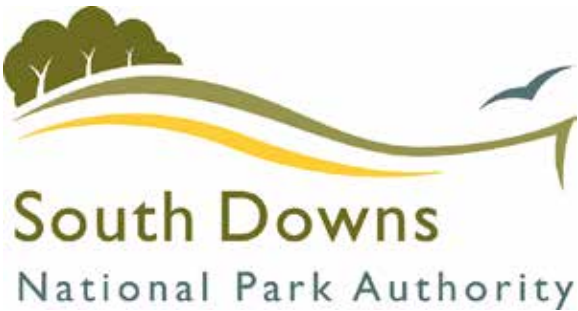
Working with and within the South Downs National Park Authority



Settlement Studies and Local site plan allocations on behalf of SDNPA



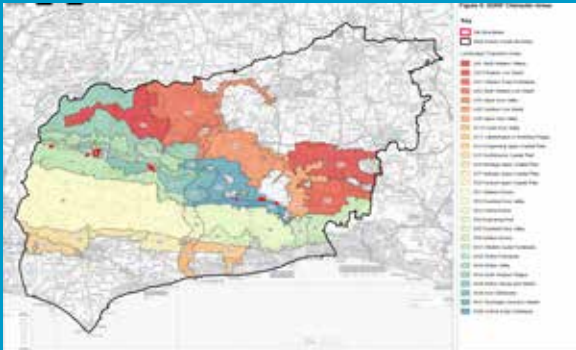
Evidence to support SDNPA response to proposed major Highway improvements



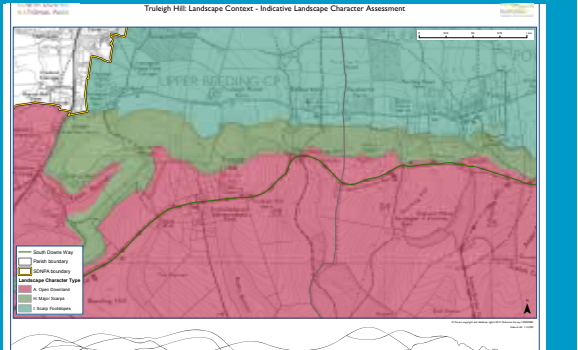
Based within the South Downs National Park, terra firma has not only represented countless clients in seeking Planning Permission but has had numerous appointments to assist the Authority in responding to applications on their behalf.



Butser Ancient Farm application to SDNPA



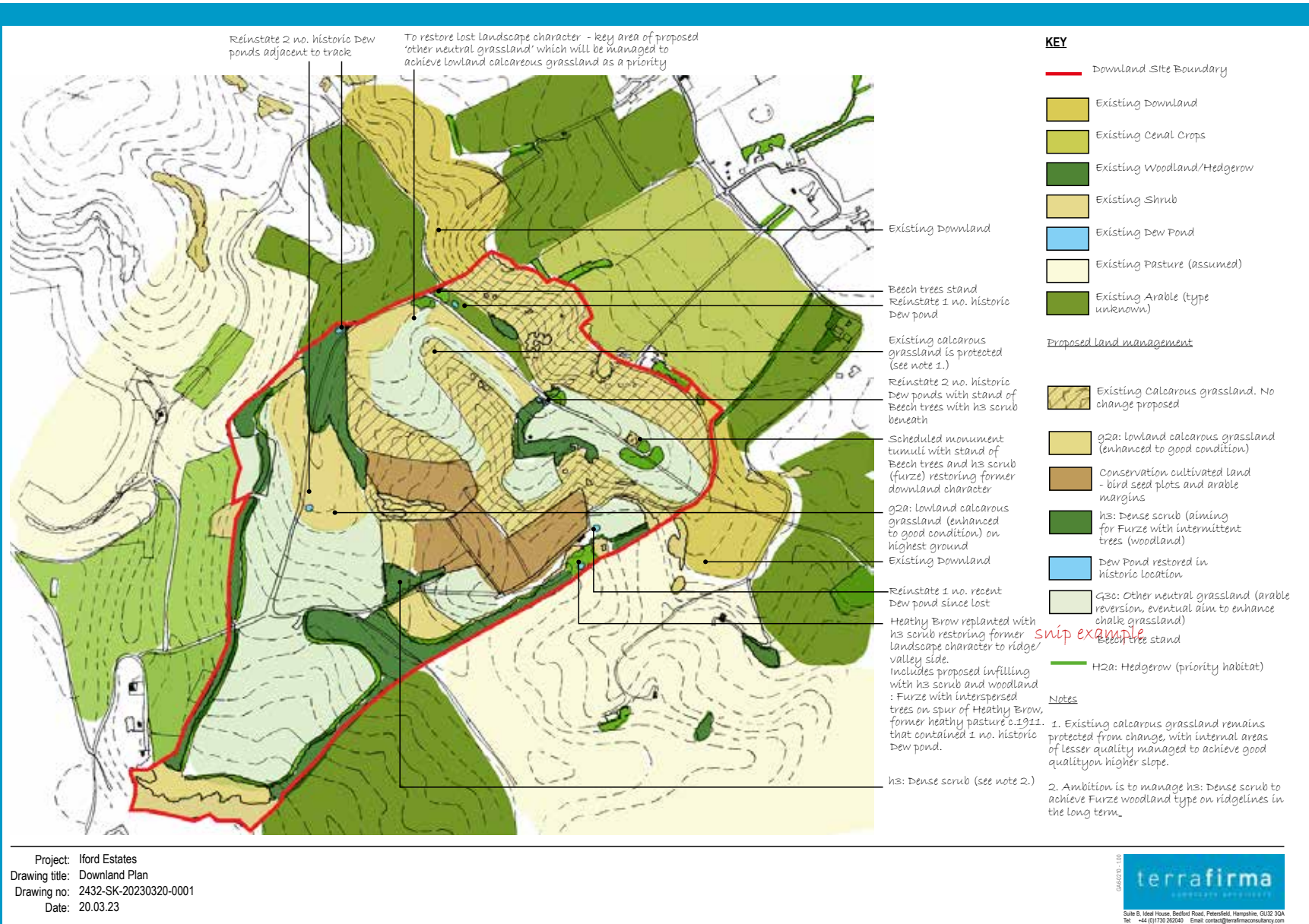
- On behalf of SDNPA
- Truleigh Hill Landscape Project
 - Soft Sand Quarry Landscape Assessment
 - Heathland Reunited Sculpture Project





SDNPA Viticulture South Downs National Park

Landscape input to Vinescape's study for the future of the wine industry in the national park, including climate change modelling.



VITICULTURE GROWTH IMPACT ASSESSMENT: SUMMARY REPORT

Visual impacts of viticulture on the South Downs National Park landscape

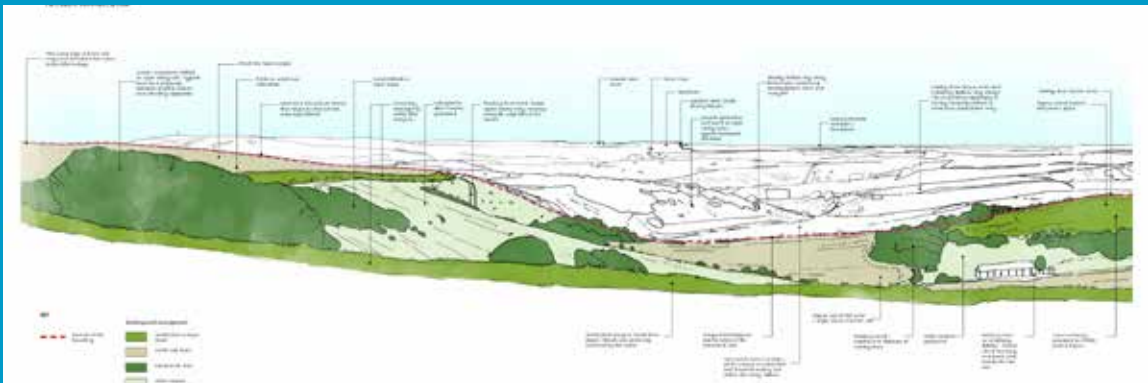
The fundamental character of the South Downs, such as their open quality, could be affected by vineyards. The raised, linear nature of vines and trellising is very different to arable crops or pastureland, and the report found that there is potential for visual degradation if the scale of vineyards is too extensive or if they are inappropriately located. The study includes several iconic National Park views, in which potential for viticulture exists, to understand how vineyards could appear or be integrated within the landscape. One example is set out to the right.

These images show the visual impact of vineyards on the landscape. Where they are well placed and sensitively proportioned, they integrate well. However, to address a potential loss of openness, tranquillity, or key views, the report recommends that landscape integration is given significant consideration by those establishing vineyards, with the aim of minimising any negative impacts.

OUSE VALLEY, NEAR LEWES (ORIGINAL IMAGE)



OUSE VALLEY, NEAR LEWES - ARTIST'S IMPRESSION, SHOWING A VINEYARD IN THE CENTRE



Iford Estate Lewes

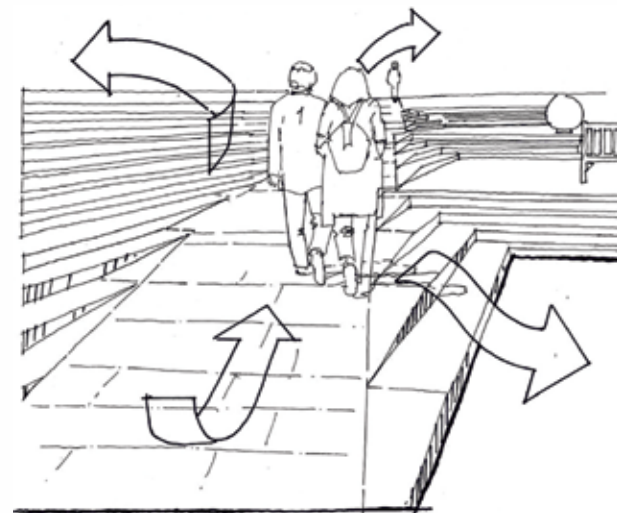
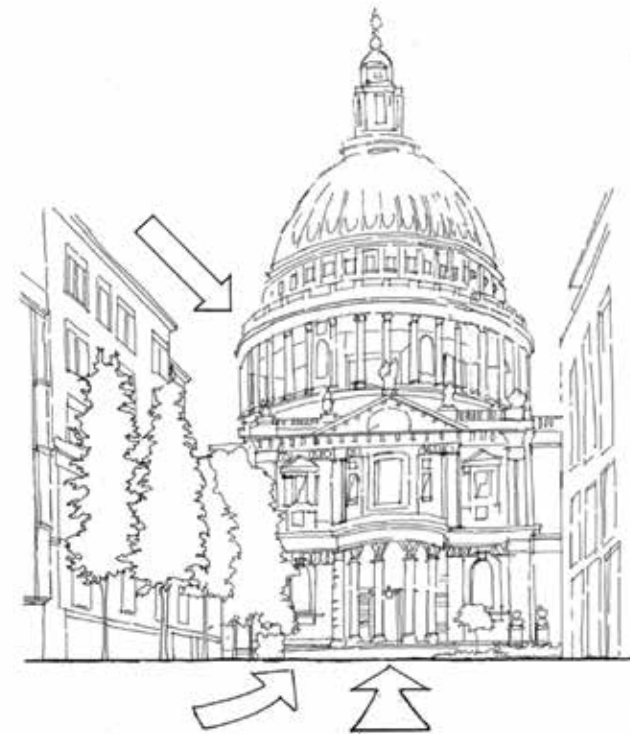
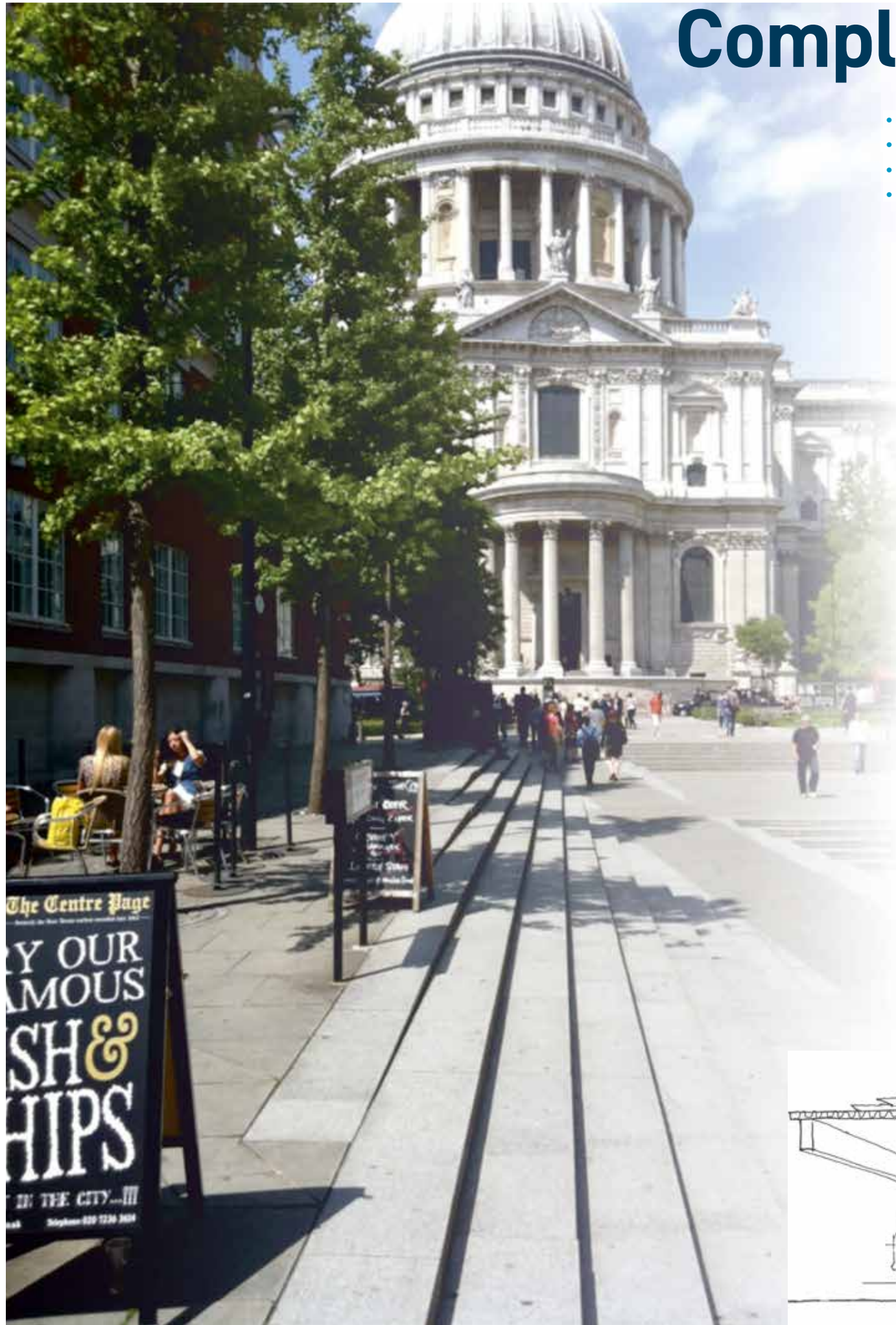
Landscape advice to 800ha nature enhancement and restoration project using Biodiversity Net Gain to fund transformative landscape-scale change.



Complex problems, simple solutions

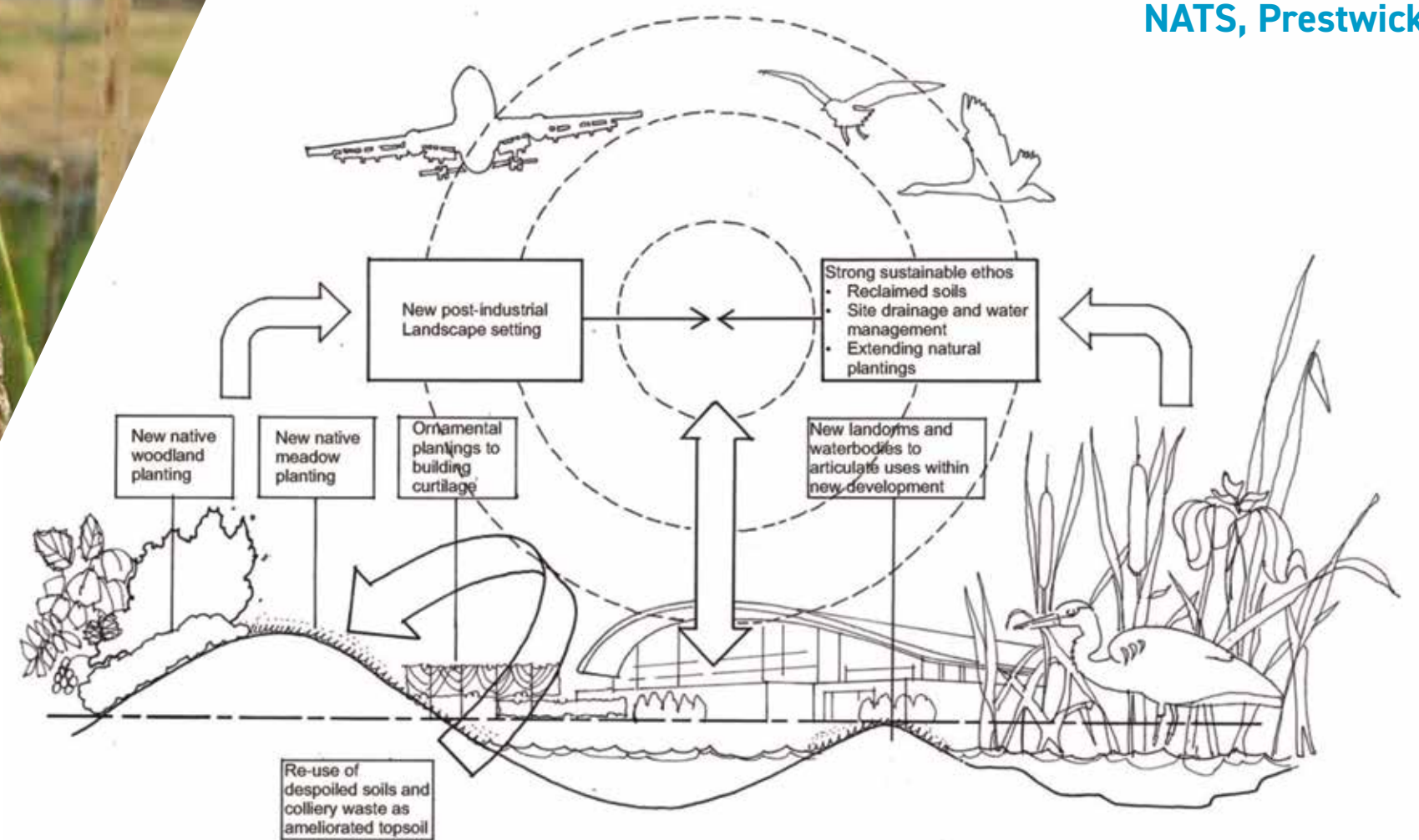
Petershill, City of London

- Multi-directional steps arrangement
- Predominant route allowing ramp access at 1:20+ to avoid handrails
- Platforms created at regular intervals to allow rest and activity
- Generously proportioned steps allow sitting opportunities



Sustainability

NATS, Prestwick



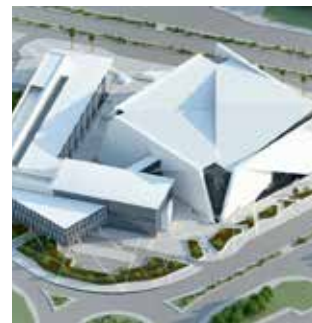


Sense of place

East Beach, Selsey



terrafirma
LANDSCAPE ARCHITECTS



Get in touch

T: +44 (0) 1730 262040
W: www.terrafirmaconsultancy.com
E: robyn@terrafirmaconsultancy.com
alison@terrafirmaconsultancy.com



terra firma works globally, at all scales, in every sector, for government departments (including the MOD and FCO), local governments, private clients, NGOs, community groups and individuals.

Abri Housing	East Sussex County Council	Londonewcastle	Seaford College
Affinity Sutton	East Wittering & Bracklesham Parish Council	LSC Framework	Seaward Property
Alfred Homes	Eastleigh Borough Council	M&G Real Estate	SEGR0
All England Lawn Tennis Club	Enfield Council	Magdalen College	Sellar Property Group/Portsmouth FC
Arun District Council	Engie	Maggie's Centres	SevenCapital
ASDA	Faithful+Gould	Mast Pond Wharf Ltd	Sigma Homes
Augur Buchler	Forestry Commission	Matterley Estate	Solidere (Beirut)
Aurora Developments	Friends of the Elderly	McCarthy and Stone	Sonning Common Parish Council
BAA	Frontier Estates	MEPC	South Buckinghamshire District Council
Barclay St James	Froyle Parish Council	Merivale Moore Plc	South Downs National Park Authority
Bargate Homes	G&L Homes	Metis Homes	South Leigh Parish Council
Barnardo Developments Ltd	Galliford Try	Metropolitan	South Oxfordshire District Council
Barratt David Wilson	Gentian	MICA Architects	Southend FC
Barton Willmore	Gifford	Michael Brady	Southwick Estate
Basepoint Plc	Gilbert White Museum	MITIE	Sovereign Centros
Basingstoke and Deane	Glenmore	Morgan Ashurst	St Swithun's School
Bedales School	Goodwood Estate	Morgan Sindall	Stansted Park
Beech Neighbourhood Plan Steering Group	Greater Brighton Metropolitan College	National Trust	Stonegate Homes
Bellway Homes	Grupa 93	NATS	Stripe Consulting
Bellwood Homes	Gryphon Land	Newbridge	Summix
Berkeley Homes	Guildmore	Newhaven Town Council	Surrey & Borders NHS Foundation Trust
Bewley Homes	Hammersmith and Fulham Borough Council	Newton Valence Farm	Surrey County Council
BHASVIC	Hampshire and Regional	Nurture	TA Fisher
Boodai Constructions (Kuwait)	Hampshire County Council	Oakdene	Tandridge District Council
Bourne Leisure	Hampshire Primary Care Trust	Old Thorns Hotel Group	Taylor Wimpey
Bouygues	Havant Borough Council	One Horton Heath	Test Valley Borough Council
Bovis	Henley Royal Regatta	Osborne	The Classic Home Company
Brighton and Hove City Council	HORIBA MIRA	Pacalis	The ONYX Environmental Trust
Brighton General Hospital	Housing 21	Parker Farms	The Portsmouth Partnership
Brixton Plc	Human Nature	Peer Invstments	The Sustainability Centre
Brookwood Cemetery	IBI	Peter Brett Associates	Tilfen Land
Brookwood Park	Inmind	Petersfield Community Land Trust	Twyford Parish Council
Bugler Developments	International School of London	Petersfield Society	University of East London
Burford Plc	Interserve	Pilgrims Friend Society	University of Oxford
Butser Ancient Farm	ISG	PNH Properties Group	University of Portsmouth
Cala Homes	Isle Of Wight Council	Portsmouth City Council	Vale of White Horse District Council
Cambridge Biomedical Campus	Jacobs	Princes Mead School	Village Foundations
Celtique	Jansons	Prosperity (Moscow)	Warner Leisure
Central Bedfordshire District Council	Jesus College (Oxford)	QPR Football Club	Waterbridge
Chichester District Council	Kent College	Radian Housing Association	West Berks District Council
Chiltern District Council	Kier Build	Raglan Housing Association	West Sussex County Council
Churchill Retirement Living	Kier Southern	Railtrack	West Waddy ADP
Claritas	Kind and Co	Ramboll	West Yorkshire Police
Colten Developments	Langmead	Rectory Homes	Willmott Dixon
Comer Homes	Leadbitter	Re-Format LLP	Winchester City Council
Cornwall County Council	Leonard Cheshire	Regional Investments Plc	Winchester City Council
Corporate Estates	Lewes District Council	Renaissance	Woking Borough Council
Crayfern	Linden Homes	Ridge	Yehudi Menuhin School
Cyprus Cultural Centre	Lochailort	Rowlands Castle Neighbourhood Plan Group	YMCA
Daneshill School (Wellington Estate)	London Borough of Croydon	Royal Grammar School, Guildford	
Development Securities Plc	London Borough of Southwark	Sanya Tianya Haijiao Tourism Devpt.Co.Ltd	
Domaine Developments Drew Smith	London Clubs International	Scats	
East Hampshire District Council	London Southend Airport	Schrodors	



terrafirma

LANDSCAPE ARCHITECTS

www.terrafirmaconsultancy.com